





3:3

2014-079152

BOOK 107 PAGE 75

# FINAL PLAT OF SUBDIVISION WYNDANCE SUBDIVISION PHASE 2

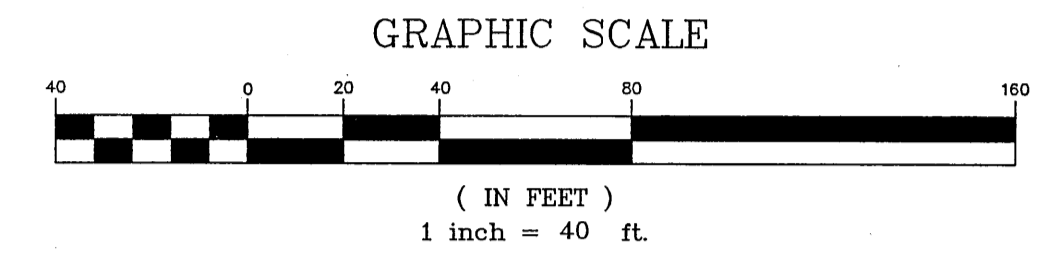
BEING A OF PART OF THE EAST HALF OF THE NORTHWEST QUARTER OF SECTION 7, TOWNSHIP 34  
NORTH, RANGE 7 WEST OF THE SECOND PRINCIPAL MERIDIAN, IN LAKE COUNTY, INDIANA.

2014 079152

STATE OF INDIANA  
LAKE COUNTY  
FILED FOR RECORD  
2014 DEC 12 AM 10:21  
MICHAEL D. BROWN  
RECORDER

523

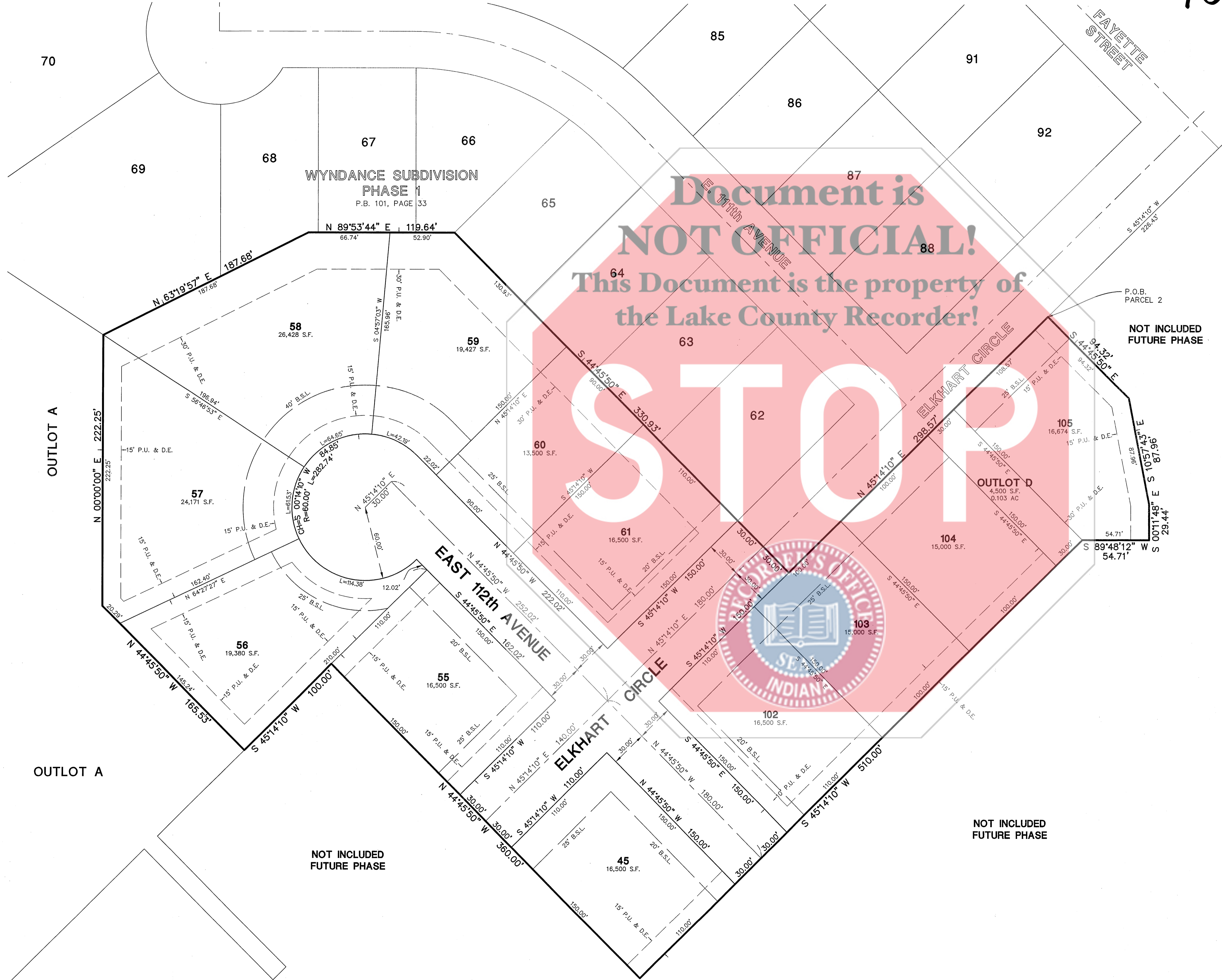
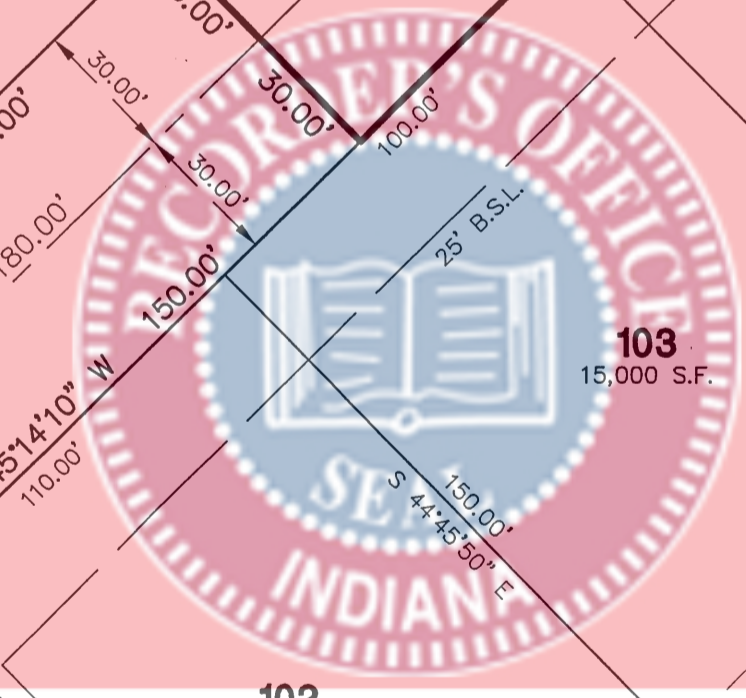
107/75



DULY ENTERED FOR TAXATION SUBJECT TO  
FINAL ACCEPTANCE FOR TRANSFER  
DEC 12 2014  
PEGGY HOLINGA KATONA  
LAKE COUNTY AUDITOR

Document is  
**NOT OFFICIAL!**  
This Document is the property of  
the Lake County Recorder!

# STOP



DATE	REVISIONS
12/03/14	REVISED REAR YARD EASEMENT ON LOTS 57 TO 61
11/13/14	ADDED EASEMENT (SHEETS 1 AND 2 ONLY)

**Manhard CONSULTING LTD**  
 200 S. State Street, Suite 200, Winfield, Indiana 46788  
 Phone: 765.866.8888 Fax: 765.866.8889  
 Civil Engineers • Surveyors • Water Resources Engineers • Water & Wastewater Engineers  
 Construction Managers • Environmental Scientists • Landscape Architects • Planners

WYNDANCE SUBDIVISION - PHASE 2  
 TOWN OF WINFIELD, INDIANA  
 FINAL PLAT OF SUBDIVISION

PROJ. MGR.: BM  
 PROJ. ASSOC.: TJM  
 DRAWN BY: GEF  
 DATE: 10/06/14  
 SCALE: 1" = 40'

SHEET  
**3** OF **3**  
 TC1W1 080075

© 2014 MANHARD CONSULTING, LTD. ALL RIGHTS RESERVED

SECONDARY PLAT

December 5, 2014 - 11:19 Dwg Name: \\und-va-man\Projects-LOV\Town\Map\Survey\Final\Drawings\Subdivision\Phase 2\02-TC1W1-PS-Plat.dwg Updated By: lmarzby