

Surveyor's Report

BOOK 25 PAGE 63

The purpose of this survey is to obtain topographic data necessary to complete a bridge design for the replacement of Bridge carrying 101st Avenue over I-65. This survey is not a property retracement survey. The project is located in Sections 2 and 3, Township 34 North, Range 8 West, Center Township and Sections 34 and 35, Township 35 North, Range 8 West, Ross Township, Lake County, Indiana.

Coordinates for the project are Indiana State Plane, West Zone, NAD83, U.S. Survey Feet, based on the INDOT Continuously Operating Reference Station RTK network derived by utilizing RTK GPS surveying techniques.

The property lines were established by utilizing recorded documents, found section corners and existing field conditions.

Line "A" was established on the apparent section line west of Mississippi Street. East of Mississippi Street, Line "A" was established on a line from a found section corner located 40 feet (+/-) east of Mississippi Street to a found Mag nail near the bridge over a ditch approximately 1000 feet to the east.

A search was made to locate Section Corners adjacent to the project using visual and metal detector techniques in the anticipated location of the corners. Should Public Land survey corners be needed where none were found, they should be reestablished and tied to this survey.

Item numbers refer to the number on the Location Control Route Survey Plat.

The following points are alignment control points set in the field by Butler, Fairman and Seufert, Inc.: 1-4. The uncertainty of location of these monuments to Line "A" is limited to errors in measurement associated with the equipment in use.

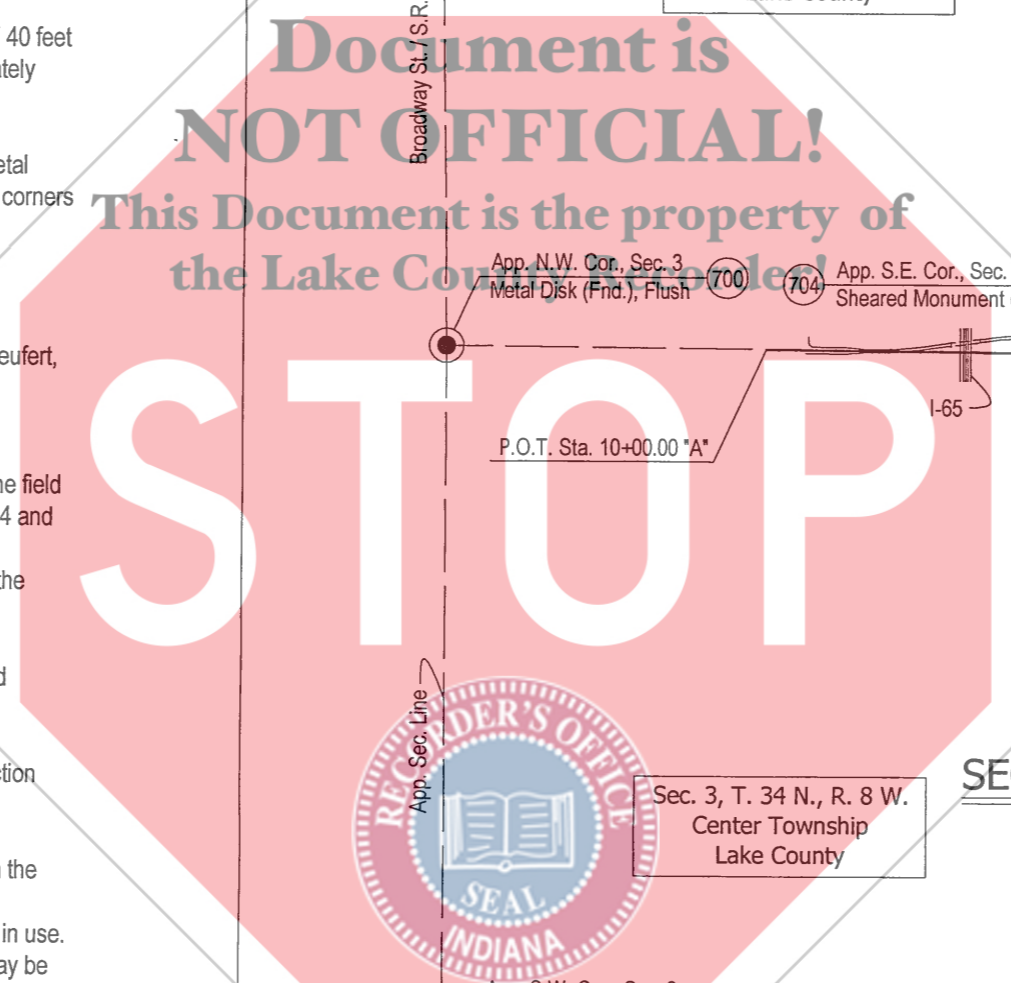
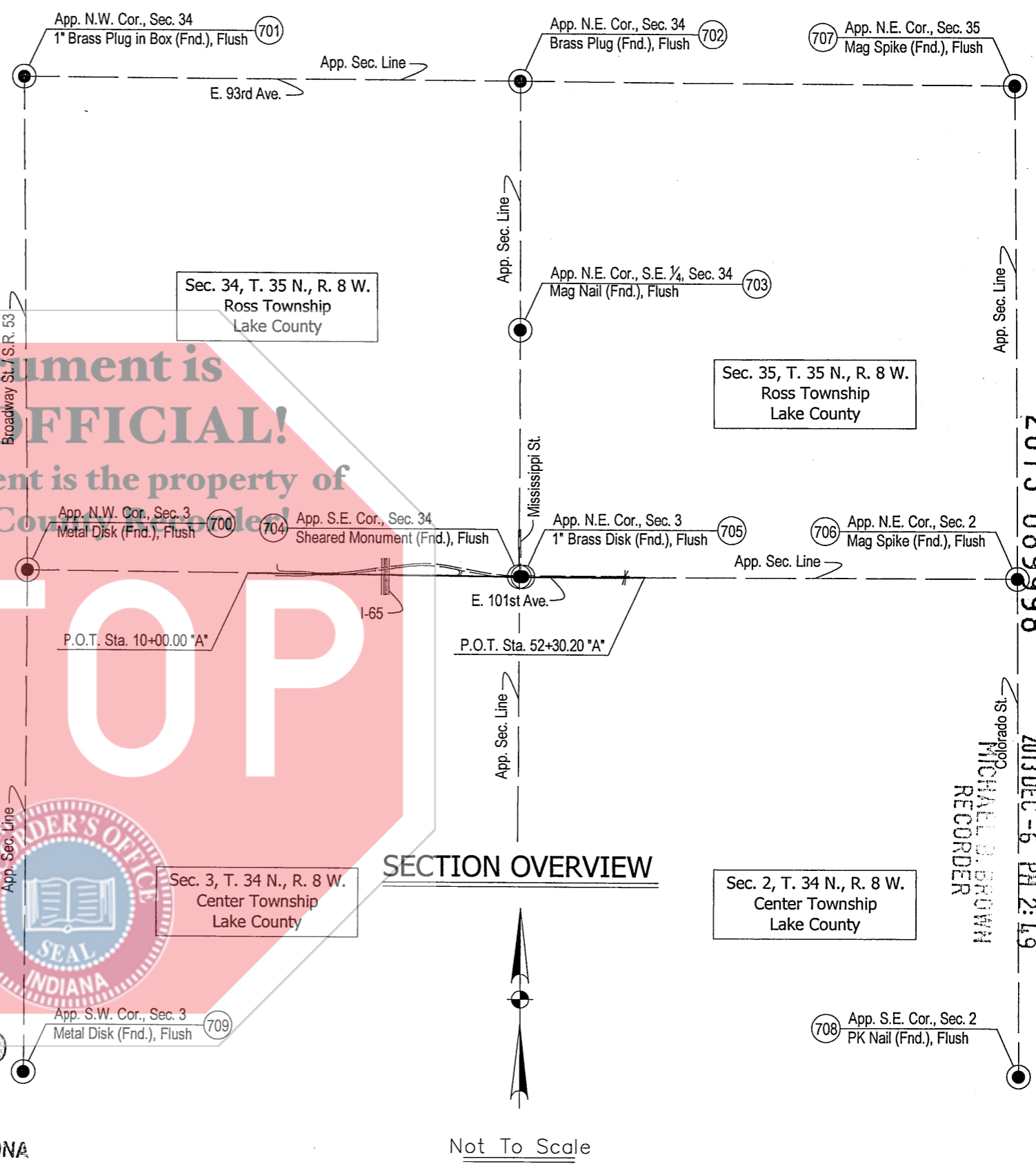
The following points are alignment control points and apparent section corners found in the field by Butler, Fairman and Seufert, Inc. at the anticipated locations of the section corners: 704 and 705. The uncertainty of location of these monuments to Line "A" is limited to errors in measurement associated with the equipment in use. Location uncertainty with respect to the original section corner location is unknown, but may be as much as 5 feet.

The following points are apparent section corners found in the field by Butler, Fairman and Seufert, Inc. at the anticipated locations of the section corners: 702, 703, 706-708. The uncertainty of location of these monuments to Line "A" is limited to errors in measurement associated with the equipment in use. Location uncertainty with respect to the original section corner location is unknown, but may be as much as 5 feet.

The following points are apparent section corners found utilizing references obtained from the Office of Surveyor of Lake County: 700, 701 and 709. The uncertainty of location of these monuments to Line "A" is limited to errors in measurement associated with the equipment in use. Location uncertainty with respect to the original section corner location is unknown, but may be as much as 2 feet.

Fieldwork completed between May 24, 2013 and June 24, 2013.

Affirmation Statement: I affirm, under the penalties for perjury, that I have taken reasonable care to redact each Social Security Number in this document, unless required by law. Mark W. Neal



FILED

DEC 06 2013

PEGGY HOLINGA KATONA
LAKE COUNTY AUDITOR

25-
#73122
E S
000218

2013 089998

2013 DEC -6 PM 2:49

STATE OF INDIANA
LAKE COUNTY
FILED FOR RECORD

MICHAEL B. BROWN
RECORDER

REPLACEMENT OF BRIDGE
CARRYING 101st AVENUE OVER I-65
TOWN OF MERRILLVILLE, LAKE COUNTY, IN.

PREPARED BY: M.DORSCH
CHECKED BY: M.NEAL

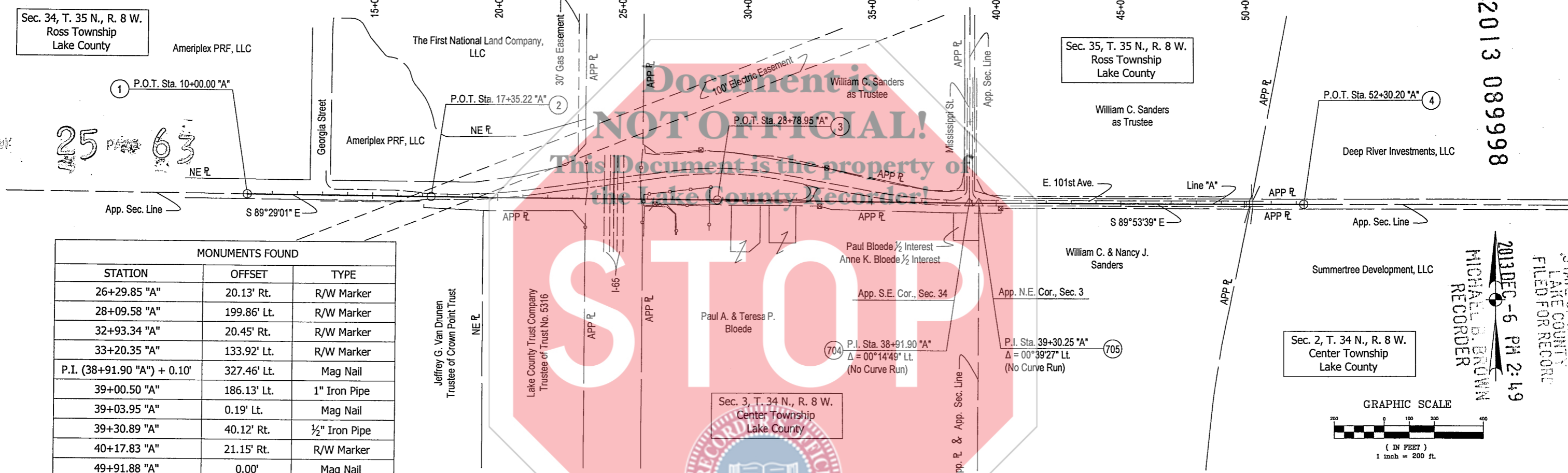
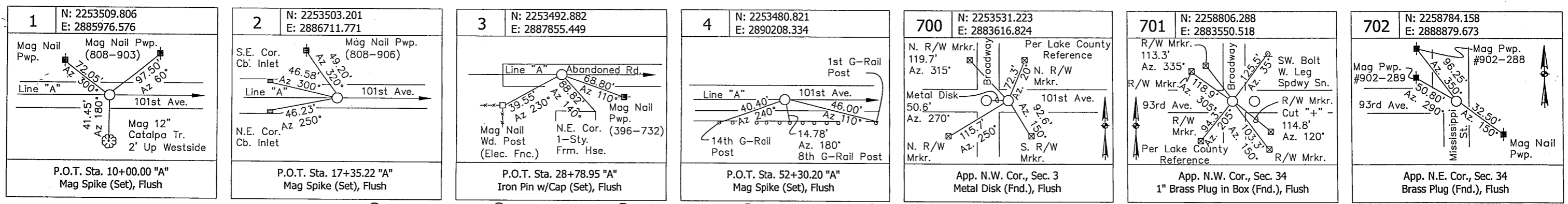
SURVEYOR STATEMENT

THIS SURVEY, TO THE BEST OF MY KNOWLEDGE AND BELIEF, IS EXECUTED ACCORDING TO THE PROVISIONS OF TITLE 865 I.A.C. 1-12-20 THROUGH 1-12-26 REGARDING ROUTE SURVEYS, EXCEPT THAT ANY DATA SHOWN REGARDING THE LOCATION OR DESCRIPTION OF THE EXISTING PARCELS IS NOT A PART OF THIS SURVEY.

LOCATION CONTROL ROUTE SURVEY PLAT

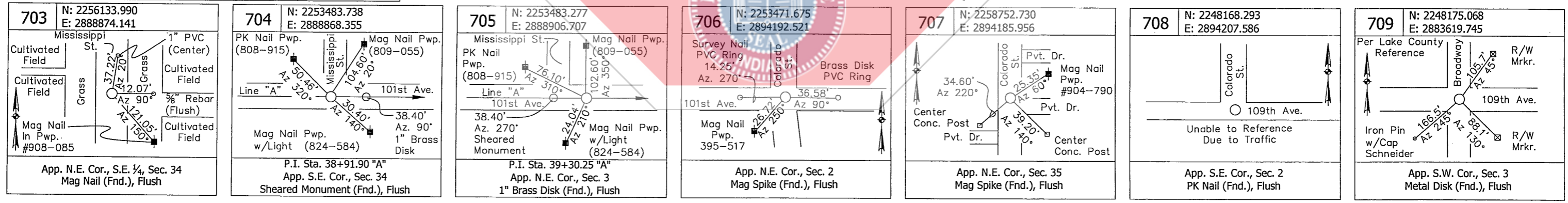
Headquarters 8450 WESTFIELD BLVD., SUITE 300 FORT WAYNE INDIANAPOLIS, IN. 46240-8302 TEL. 317-713-4615 FAX 317-713-4616 www.BFSEng.com		Branch Locations 260-459-1532 812-285-0590 812-285-0590 785-423-5892 219-789-3333 317-839-3242	
SIGNATURE: <i>Mark W. Neal</i> REGISTERED LAND SURVEYOR		DATE: 11/21/2013	
SURVEY STARTED	STRUCTURE NO.	DES. NO.	
5/24/13	N/A	N/A	
SURVEY COMPLETED	PROJECT NO.		YEAR
6/24/13	5505		2013
		SHEET	TOTAL
		1	2





MONUMENTS FOUND

STATION	OFFSET	TYPE
26+29.85 "A"	20.13' Rt.	R/W Marker
28+09.58 "A"	199.86' Lt.	R/W Marker
32+93.34 "A"	20.45' Rt.	R/W Marker
33+20.35 "A"	133.92' Lt.	R/W Marker
P.I. (38+91.90 "A") + 0.10'	327.46' Lt.	Mag Nail
39+00.50 "A"	186.13' Lt.	1" Iron Pipe
39+03.95 "A"	0.19' Lt.	Mag Nail
39+30.89 "A"	40.12' Rt.	1/2" Iron Pipe
40+17.83 "A"	21.15' Rt.	R/W Marker
49+91.88 "A"	0.00'	Mag Nail



REPLACEMENT OF BRIDGE
CARRYING 101st AVENUE OVER I-65
TOWN OF MERRILLVILLE, LAKE COUNTY, IN.

PREPARED BY: M.DORSCH
CHECKED BY: M.NEAL

SURVEYOR STATEMENT

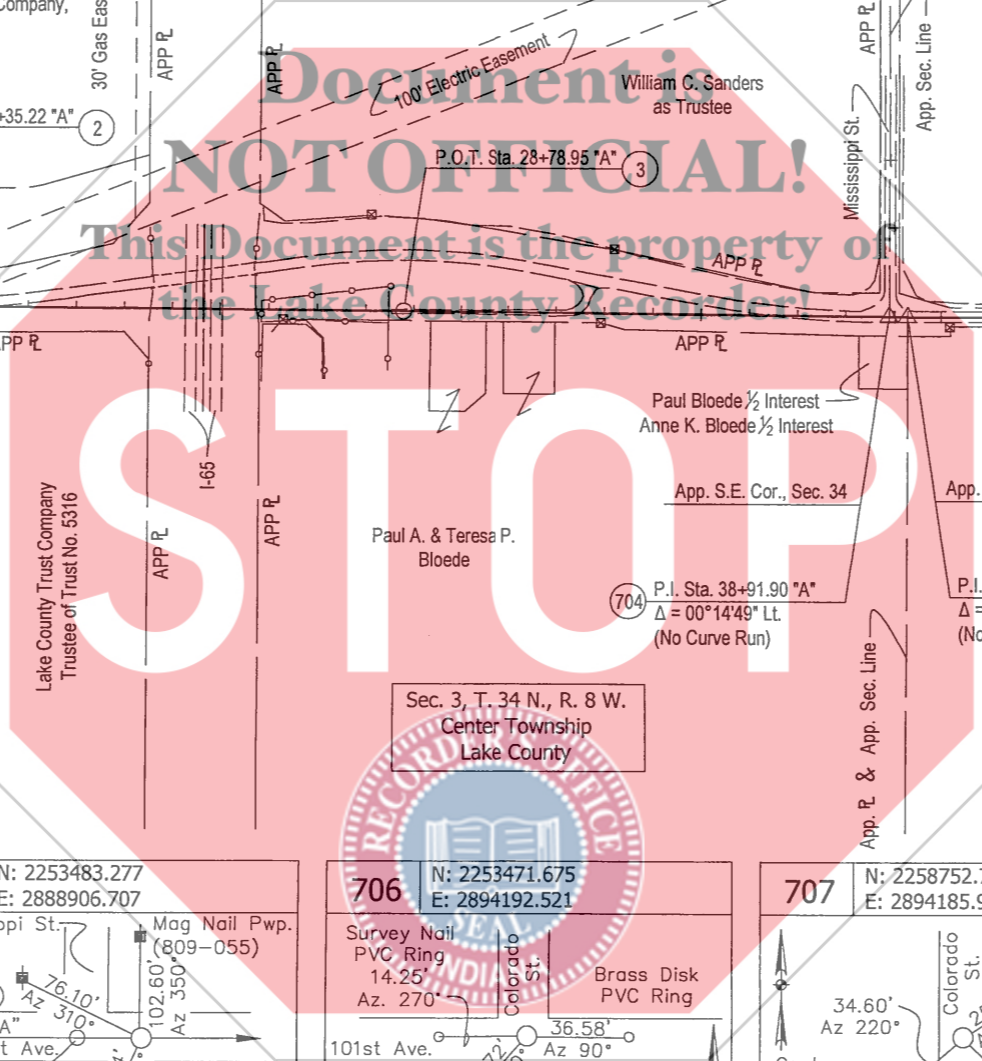
THIS SURVEY, TO THE BEST OF MY KNOWLEDGE AND BELIEF, IS EXECUTED ACCORDING TO THE PROVISIONS OF TITLE 865 I.A.C. 1-12-20 THROUGH 1-12-26 REGARDING ROUTE SURVEYS, EXCEPT THAT ANY DATA SHOWN REGARDING THE LOCATION OR DESCRIPTION OF THE EXISTING PARCELS IS NOT A PART OF THIS SURVEY.

LOCATION CONTROL ROUTE SURVEY PLAT

Headquarters: 8450 WESTFIELD BLVD., SUITE 300, FORT WAYNE, INDIANAPOLIS, IN. 46240-8302
 Branch Locations: 250-459-1532 (JEFFERSONVILLE), 612-285-0590 (LAFAYETTE), 765-423-5602 (MERRILLVILLE), 219-769-2333 (PLAINFIELD), 317-531-3242

SIGNATURE: Mark W. Neal 11/21/2013
 REGISTERED LAND SURVEYOR DATE

SURVEY STARTED	STRUCTURE NO.	DES. NO.
5/24/13	N/A	N/A
SURVEY COMPLETED	PROJECT NO.	YEAR SHEET TOTAL
6/24/13	5505	2013 2 2



2013 089998

2013 DEC -6 PM 2:49
 MICHAEL B. BROWN
 RECORDER
 STATE OF INDIANA
 LAKE COUNTY
 FILED FOR RECORD

