

6

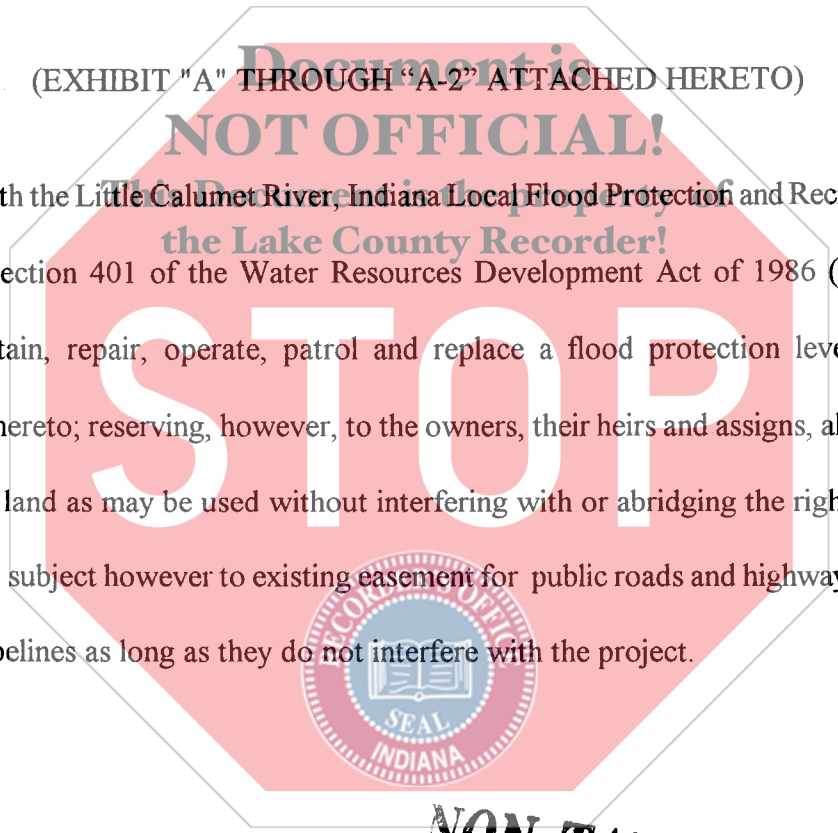
**FLOOD PROTECTION LEVEE EASEMENT**

**TOWN OF MUNSTER**, of the County of Lake, State of Indiana, hereinafter called "Grantor", hereby grants, transfers, conveys and warrants to the **STATE OF INDIANA, LITTLE CALUMET RIVER BASIN DEVELOPMENT COMMISSION**, hereinafter called "Grantee", for One Dollar and other Good and Valuable Consideration, the receipt and sufficiency of which is hereby acknowledged, a perpetual and assignable levee easement in, over and across the following described Real Estate owned by the "Grantor" and situated in the County of Lake, State of Indiana, described as follows:

2008087017

(EXHIBIT "A" THROUGH "A-2" ATTACHED HERETO)

in connection with the Little Calumet River, Indiana Local Flood Protection and Recreation Project as authorized by Section 401 of the Water Resources Development Act of 1986 (P.L. 99-662) to construct, maintain, repair, operate, patrol and replace a flood protection levee, including all appurtenances thereto; reserving, however, to the owners, their heirs and assigns, all such rights and privileges in the land as may be used without interfering with or abridging the rights and easement hereby acquired; subject however to existing easement for public roads and highways, public utilities, railroads and pipelines as long as they do not interfere with the project.



FILED  
2008 SEP 25 AM 11:11  
LAKE COUNTY RECORDER

**NON-TAXABLE**

\$20  
OK#  
010145  
WED

*Return to*  
*Grantee's address*  
Little Calumet River Basin  
Development Commission  
6100 Southport Road  
Portage, IN 46368

SEP 25 2008  
PEGGY HOLINGA KATONA  
LAKE COUNTY AUDITOR

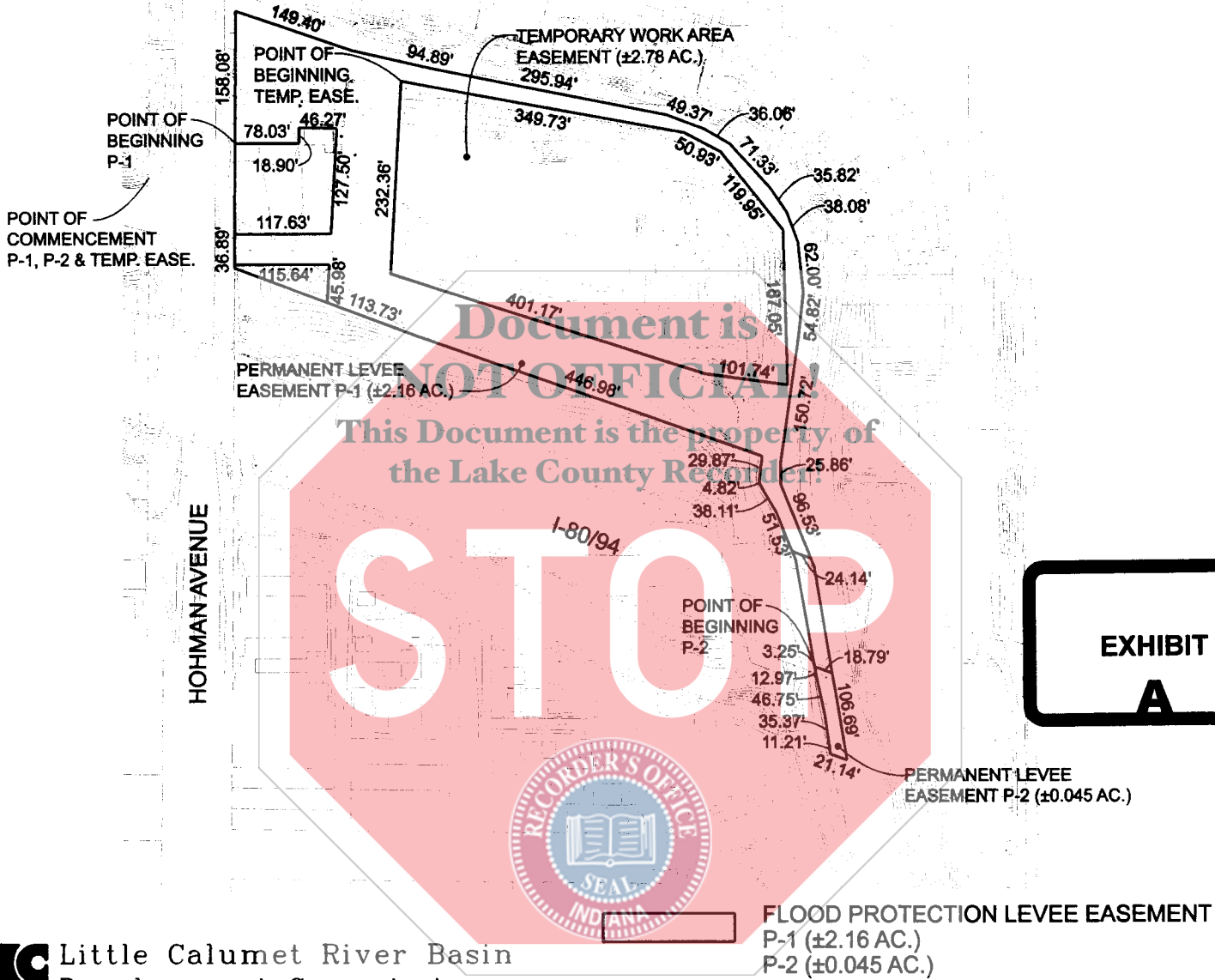
**015918**



COUNTY: LAKE  
 SECTION: 13  
 TOWNSHIP: 36 NORTH  
 RANGE: 10 WEST  
 TAX KEY: 28-0016-0005  
 DC-1336

OWNER: TOWN OF MUNSTER

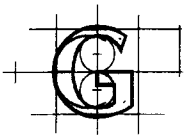
FLOOD PROTECTION LEVEE EASEMENTS P-1 & P-2  
 TEMPORARY WORK AREA EASEMENT



**EXHIBIT**  
**A**

**Little Calumet River Basin  
 Development Commission**

6100 Southport Road Portage, Indiana 46368



7501 Indianapolis Boulevard  
 Hammond, IN 46324

Phone: 219.989.1954  
 Fax: 219.989.3321

www.garcia-consulting.com

GARCIA  
 CONSULTING

PHASE 2

FLOOD PROTECTION LEVEE EASEMENT  
 P-1 (±2.16 AC.)  
 P-2 (±0.045 AC.)

TEMPORARY WORK AREA  
 EASEMENT (±2.78 AC.)

LITTLE CALUMET RIVER, INDIANA LOCAL FLOOD PROTECTION STAGE VIII - MUNSTER	
SHEET 3 OF 6	SCALE: 1" = 200'
DATE: 02/13/2008	DC-1336

COUNTY: LAKE  
SECTION: 13  
TOWNSHIP: 36 NORTH  
RANGE: 10 WEST  
TAX KEY: 28-0016-0005

# OWNER: TOWN OF MUNSTER


## FLOOD PROTECTION LEVEE EASEMENT P-1

DC-1336

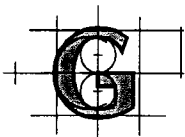
A parcel of land located in the West Half of Section 13, Township 36 North, Range 10 West in the Town of Munster, Lake County, Indiana, being more particularly described as follows:  
Commencing at the northwest corner of the intersection of River Drive and Hohman Avenue;  
thence North 90°00'00" East a distance of 104.00 feet to the east line of Hohman Avenue;  
thence North 00°24'16" East along said line a distance of 40.44 feet to the Point of Beginning;  
North 00°24'16" East along said line a distance of 158.08;  
thence South 71°39'39" East a distance of 149.40 feet;  
thence South 77°12'40" East a distance of 94.89 feet;  
thence South 78°45'14" East a distance of 295.94 feet;  
thence South 69°31'26" East a distance of 49.37 feet;  
thence South 60°03'06" East a distance of 36.06 feet;  
thence South 42°28'32" East a distance of 71.33 feet;  
thence South 34°21'56" East a distance of 35.82 feet;  
thence South 20°32'37" East a distance of 38.08 feet;  
thence South 05°51'31" East a distance of 62.00 feet;  
thence South 06°26'39" West a distance of 54.82 feet;  
thence South 08°21'41" West a distance of 150.72 feet;  
thence South 00°00'00" East a distance of 25.86 feet;  
thence South 22°08'56" East a distance of 96.53 feet;  
thence North 69°42'10" West a distance of 24.14 feet;  
thence North 22°20'42" West a distance of 51.53 feet;  
thence North 30°16'17" West a distance of 38.11 feet;  
thence North 18°51'29" West a distance of 4.82 feet;  
thence North 07°45'56" East a distance of 29.87 feet;  
thence North 70°50'38" West a distance of 446.98 feet;  
thence North 69°40'39" West a distance of 113.73 feet;  
thence North 03°29'01" East a distance of 45.98 feet;  
thence North 90°00'00" West a distance of 115.64 feet to the east line of Hohman Avenue;  
thence North 00°24'16" East along said line a distance of 36.89 feet;  
thence North 90°00'00" East a distance of 117.63 feet;  
thence North 03°27'43" East a distance of 127.50 feet;  
thence North 88°55'45" West a distance of 46.27 feet;  
thence South 00°49'30" West a distance of 18.90 feet;  
thence South 90°00'00" West a distance of 78.03 feet to the Point of Beginning, said parcel containing 4.94 acres, more or less.

Excepting therefrom that part described as follows:

Commencing at the northwest corner of the intersection of River Drive and Hohman Avenue;  
thence North 90°00'00" East a distance of 104.00 feet to the east line of Hohman Avenue;  
thence North 00°24'16" East along said line a distance of 198.52 feet; thence South 71°39'39"  
East a distance of 149.40 feet; thence South 77°12'40" East a distance of 62.91 feet; thence  
South 03°24'00" West a distance of 22.76 feet to the Point of Beginning;  
thence South 79°31'21" East a distance of 349.73 feet;  
thence South 62°43'32" East a distance of 50.93 feet;  
thence South 38°37'22" East a distance of 119.95 feet;  
thence South 01°35'24" East a distance of 187.05 feet;  
thence North 82°10'19" West a distance of 101.74 feet;  
thence North 72°19'17" West a distance of 401.17 feet;  
thence North 03°24'00" East a distance of 232.36 feet to the Point of Beginning, said part  
containing 2.78 acres, more or less, leaving a remaining area of 2.16 acres, more or less.

 Little Calumet River Basin  
Development Commission

6100 Southport Road Portage, Indiana 46368



GARCIA  
CONSULTING

7501 Indianapolis Boulevard  
Hammond, IN 46324

Phone: 219.989.1954  
Fax: 219.989.3321

www.garcia-consulting.com

PHASE 2

LITTLE CALUMET RIVER, INDIANA  
LOCAL FLOOD PROTECTION  
STAGE VIII - MUNSTER

SHEET 4 OF 6

SCALE: N/A

DATE: 02/13/2008

DC-1336

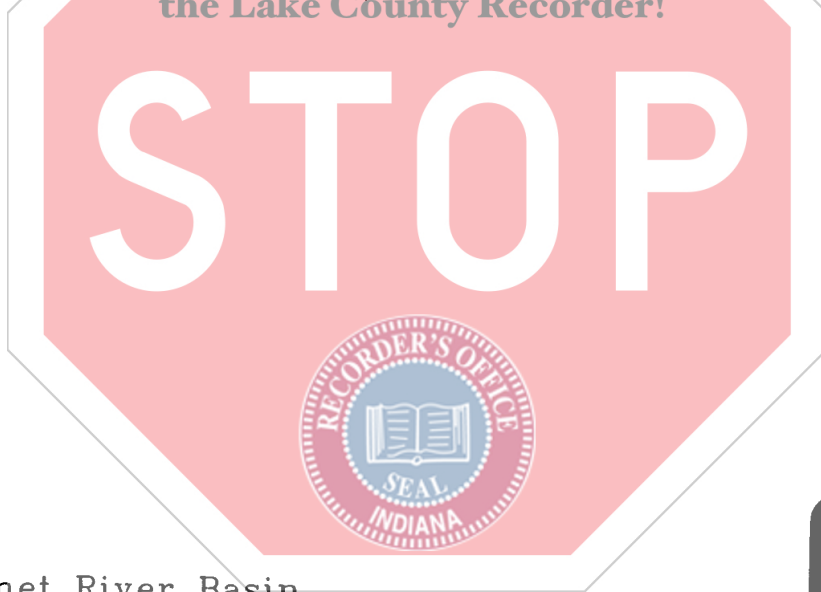
COUNTY: LAKE  
SECTION: 13  
TOWNSHIP: 36 NORTH  
RANGE: 10 WEST  
TAX KEY: 28-0016-0005

**OWNER: TOWN OF MUNSTER**

FLOOD PROTECTION LEVEE EASEMENT P-2

**DC-1336**

A parcel of land located in the West Half of Section 13, Township 36 North, Range 10 West in the Town of Munster, Lake County, Indiana, being more particularly described as follows:  
Commencing at the northwest corner of the intersection of River Drive and Hohman Avenue; thence North 90°00'00" East a distance of 104.00 feet to the east line of Hohman Avenue; thence South 00°24'16" West along said line a distance of 109.79 feet; thence South 69°40'39" East a distance of 234.05 feet; thence South 70°50'38" East a distance of 446.98 feet; thence South 07°45'56" West a distance of 29.87 feet; thence South 18°51'29" East a distance of 4.82 feet; thence South 30°16'17" East a distance of 38.11 feet; thence South 22°20'42" East a distance of 61.75 feet; thence South 10°10'22" East a distance of 132.39 feet to the Point of Beginning;  
thence North 89°52'01" East a distance of 3.25 feet;  
thence South 69°22'13" East a distance of 18.79 feet;  
thence South 09°33'01" East a distance of 106.69 feet;  
thence North 70°00'42" West a distance of 21.14 feet;  
thence North 09°46'44" West a distance of 11.21 feet;  
thence North 08°09'29" West a distance of 35.37 feet;  
thence North 11°40'22" West a distance of 46.75 feet;  
thence North 10°10'22" West a distance of 12.97 feet to the Point of Beginning, said parcel containing 0.045 acres, more or less.



**Little Calumet River Basin  
Development Commission**

6100 Southport Road Portage, Indiana 46368



**GARCIA  
CONSULTING**

7501 Indianapolis Boulevard  
Hammond, IN 46324

Phone: 219.989.1954  
Fax: 219.989.3321

[www.garcia-consulting.com](http://www.garcia-consulting.com)



**LITTLE CALUMET RIVER, INDIANA  
LOCAL FLOOD PROTECTION  
STAGE VIII - MUNSTER**

**SHEET 5 OF 6**

**SCALE: N/A**

**DATE: 02/13/2008**

**DC-1336**

**PHASE 2**