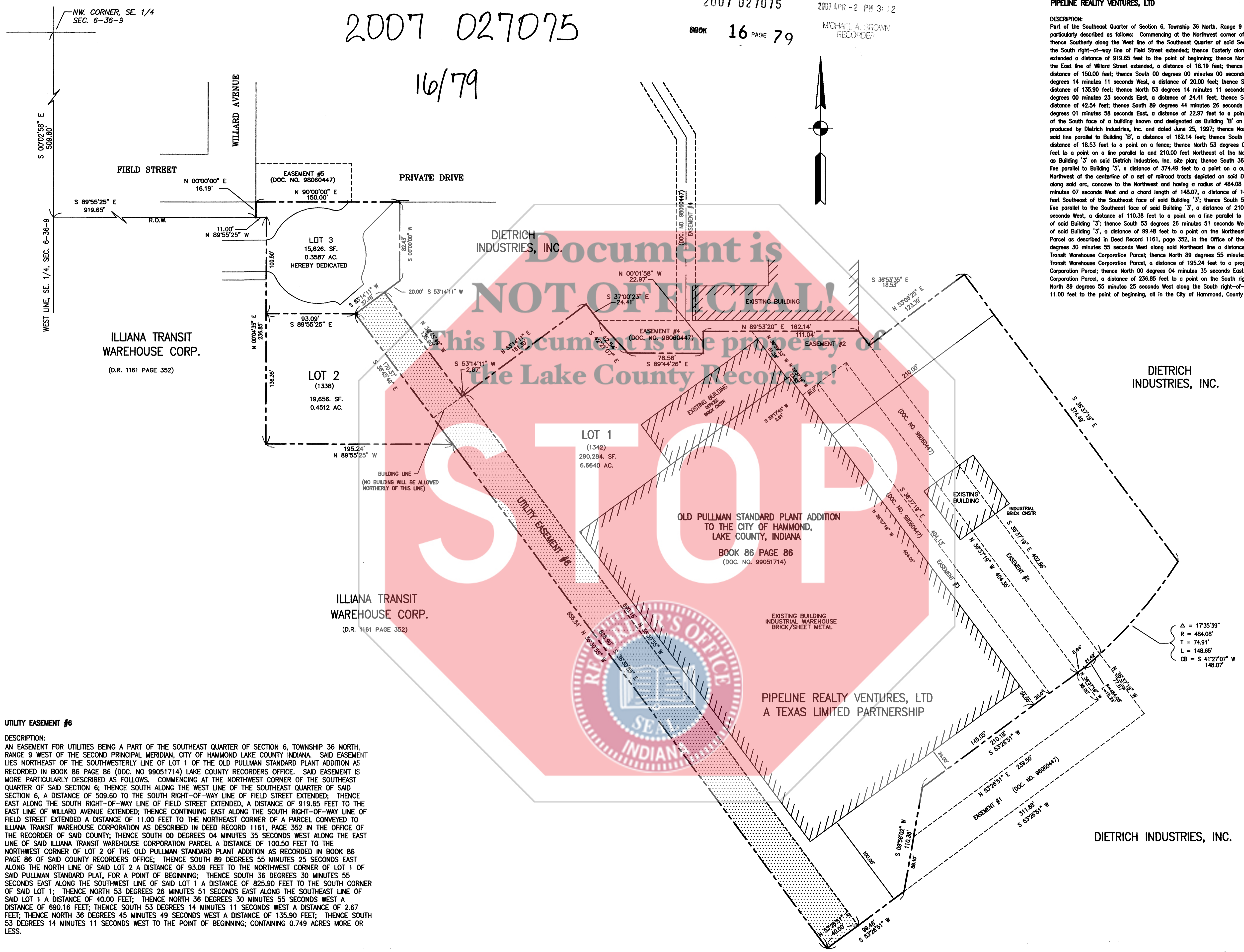


STATE OF INDIANA
LAKE COUNTY
FILED FOR RECORD
2007 APR -2 PM 3:12
MICHAEL A. BROWN
RECORDER

2007 027075
BOOK 16 PAGE 79

2007 027075

16/79



PIPELINE REALTY VENTURES, LTD

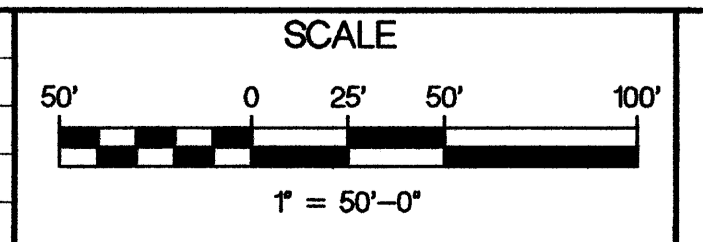
DESCRIPTION:
Part of the Southeast Quarter of Section 6, Township 36 North, Range 9 West of the Second Principal Meridian more particularly described as follows: Commencing at the Northwest corner of the Southeast Quarter of said Section 6; thence South along the West line of the Southeast Quarter of said Section 6 a distance of 509.60 feet to a point on the South right-of-way line of Field Street extended; thence East along the South right-of-way line of Field Street extended a distance of 919.65 feet to the point of beginning; thence North 00 degrees 00 minutes 00 seconds East along the East line of Willard Street extended, a distance of 16.19 feet; thence North 90 degrees 00 minutes 00 seconds East, a distance of 150.00 feet; thence South 00 degrees 00 minutes 00 seconds West, a distance of 82.43 feet; thence South 53 degrees 14 minutes 11 seconds West, a distance of 20.00 feet; thence South 36 degrees 45 minutes 49 seconds East, a distance of 135.90 feet; thence North 53 degrees 14 minutes 11 seconds East, a distance of 161.30 feet; thence South 37 degrees 00 minutes 23 seconds East, a distance of 24.41 feet; thence South 42 degrees 21 minutes 07 seconds East, a distance of 42.54 feet; thence South 89 degrees 44 minutes 26 seconds East, a distance of 78.58 feet; thence North 00 degrees 01 minutes 58 seconds East, a distance of 22.97 feet to a point on a line which is parallel to and 11.00 feet South of the South face of a building known and designated as Building 'B' on a drawing titled site plan, Drawing Number FP-192501 produced by Dietrich Industries, Inc. and dated June 25, 1997; thence North 89 degrees 53 minutes 20 seconds East along said line parallel to Building 'B', a distance of 162.14 feet; thence South 36 degrees 53 minutes 35 seconds East, a distance of 123.39 feet to a point on a fence; thence North 53 degrees 00 minutes 25 seconds East, a distance of 123.39 feet to a point on a line parallel to and 210.00 feet Northwest of the Northwest face of a building known and designated as Building '3' on said Dietrich Industries, Inc. site plan; thence South 36 degrees 37 minutes 19 seconds East along said line parallel to Building '3', a distance of 374.49 feet to a point on a curve, said curve being parallel to and 8.23 feet Northwest of the centerline of a set of railroad tracts depicted on said Dietrich Industries, Inc. site plan; thence Southwesterly along said arc, concave to the Northwest and having a radius of 484.08 feet and a chord bearing of South 41 degrees 27 minutes 07 seconds West and a chord length of 148.07 feet; thence South 53 degrees 26 minutes 51 seconds West along said line parallel to the Southeast face of said Building '3', a distance of 210.18 feet; thence South 09 degrees 58 minutes 02 seconds West, a distance of 110.38 feet to a point on a line parallel to and 100.00 feet Southeast of the Southeast face of said Building '3'; thence South 53 degrees 26 minutes 51 seconds West along said line parallel to the Southeast face of said Building '3', a distance of 99.48 feet to a point on the Northeast line of the Illiana Transit Warehouse Corporation Parcel as described in Deed Record 1161, page 352, in the Office of the Recorder of Lake County, Indiana; thence North 36 degrees 30 minutes 35 seconds West along said Northeast line a distance of 655.54 feet to a property corner of said Illiana Transit Warehouse Corporation Parcel; thence North 89 degrees 55 minutes 25 seconds West along a North line of said Illiana Transit Warehouse Corporation Parcel, a distance of 195.24 feet to a property corner of said Illiana Transit Warehouse Corporation Parcel; thence North 00 degrees 04 minutes 35 seconds East along the East line of said Illiana Transit Warehouse Corporation Parcel, a distance of 236.85 feet to a point on the South right-of-way line of Field Street extended; thence North 89 degrees 55 minutes 25 seconds West along the South right-of-way line of Field Street extended, a distance of 11.00 feet to the point of beginning, all in the City of Hammond, County of Lake, State of Indiana.

FILED
APR 02 2007
PEGGY HOLINGA KATONA
LAKE COUNTY AUDITOR

UTILITY EASEMENT #6

DESCRIPTION:
AN EASEMENT FOR UTILITIES BEING A PART OF THE SOUTHEAST QUARTER OF SECTION 6, TOWNSHIP 36 NORTH, RANGE 9 WEST OF THE SECOND PRINCIPAL MERIDIAN, CITY OF HAMMOND LAKE COUNTY INDIANA. SAID EASEMENT LIES NORTHEAST OF THE SOUTHWESTERLY LINE OF LOT 1 OF THE OLD PULLMAN STANDARD PLANT ADDITION AS RECORDED IN BOOK 86 PAGE 86 (DOC. NO. 99051714) LAKE COUNTY RECORDERS OFFICE. SAID EASEMENT IS MORE PARTICULARLY DESCRIBED AS FOLLOWS. COMMENCING AT THE NORTHWEST CORNER OF THE SOUTHEAST QUARTER OF SAID SECTION 6; THENCE SOUTH ALONG THE WEST LINE OF THE SOUTHEAST QUARTER OF SAID SECTION 6, A DISTANCE OF 509.60 TO THE SOUTH RIGHT-OF-WAY LINE OF FIELD STREET EXTENDED; THENCE EAST ALONG THE SOUTH RIGHT-OF-WAY LINE OF FIELD STREET EXTENDED, A DISTANCE OF 919.65 FEET TO THE EAST LINE OF WILLARD AVENUE EXTENDED; THENCE CONTINUING EAST ALONG THE SOUTH RIGHT-OF-WAY LINE OF FIELD STREET EXTENDED A DISTANCE OF 11.00 FEET TO THE NORTHEAST CORNER OF A PARCEL CONVEYED TO ILLIANA TRANSIT WAREHOUSE CORPORATION AS DESCRIBED IN DEED RECORD 1161, PAGE 352 IN THE OFFICE OF THE RECORDER OF SAID COUNTY; THENCE SOUTH 00 DEGREES 04 MINUTES 35 SECONDS WEST ALONG THE EAST LINE OF SAID ILLIANA TRANSIT WAREHOUSE CORPORATION PARCEL A DISTANCE OF 100.50 FEET TO THE NORTHWEST CORNER OF LOT 2 OF THE OLD PULLMAN STANDARD PLANT ADDITION AS RECORDED IN BOOK 86 PAGE 86 OF SAID COUNTY RECORDERS OFFICE; THENCE SOUTH 89 DEGREES 55 MINUTES 25 SECONDS EAST ALONG THE NORTH LINE OF SAID LOT 2 A DISTANCE OF 93.09 FEET TO THE NORTHWEST CORNER OF LOT 1 OF SAID PULLMAN STANDARD PLANT, FOR A POINT OF BEGINNING; THENCE SOUTH 36 DEGREES 30 MINUTES 55 SECONDS EAST ALONG THE SOUTHWEST LINE OF SAID LOT 1 A DISTANCE OF 825.90 FEET TO THE SOUTH CORNER OF SAID LOT 1; THENCE NORTH 53 DEGREES 26 MINUTES 51 SECONDS EAST ALONG THE SOUTHEAST LINE OF SAID LOT 1 A DISTANCE OF 40.00 FEET; THENCE NORTH 36 DEGREES 30 MINUTES 55 SECONDS WEST A DISTANCE OF 690.16 FEET; THENCE SOUTH 53 DEGREES 14 MINUTES 11 SECONDS WEST A DISTANCE OF 2.67 FEET; THENCE NORTH 36 DEGREES 45 MINUTES 49 SECONDS WEST A DISTANCE OF 135.90 FEET; THENCE SOUTH 53 DEGREES 14 MINUTES 11 SECONDS WEST TO THE POINT OF BEGINNING; CONTAINING 0.749 ACRES MORE OR LESS.

DESIGNED	JPP	4			
DRAWN	JPP	3			
CHECKED	JPP	2			
		1			
		NO.	DATE	APPD.	REVISION



**DIETRICH METAL FRAMING
A WORTHINGTON INDUSTRIES COMPANY
UTILITY EASEMENT**

**UTILITY EASEMENT #6
EXHIBIT 1**

NIES engineering, inc.
2421 173rd Street, Hammond, Indiana, 46323
Phone: (219) 844 8680 Fax: (219) 844 7754
municipal, civil, environmental & transportation engineering

This drawing is not intended to be represented as a retracement or original boundary survey, a route survey, or a Surveyor Location Report.

Joseph R. Katus 4/2/07

PROJECT NUMBER
05-539-04

DATE & TIME
05/22/06 - 1326

SHEET
1
OF 1