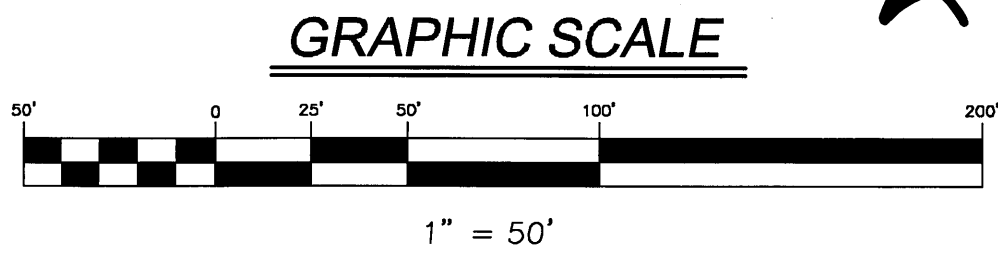


STATE OF ILLINOIS
FILED FOR RECORD
2006 SEP 25 AM 10:32
MICHAEL A. CROWN
RECORDER

100/32 2006 083770
2006 083770

SECONDARY PLAT OF LAKE HILLS RESUBDIVISION UNIT 9

PART OF SECTION 28, TOWNSHIP 35 NORTH, RANGE 9 WEST OF THE SECOND
PRINCIPAL MERIDIAN, IN LAKE COUNTY, INDIANA.



2 OF 4

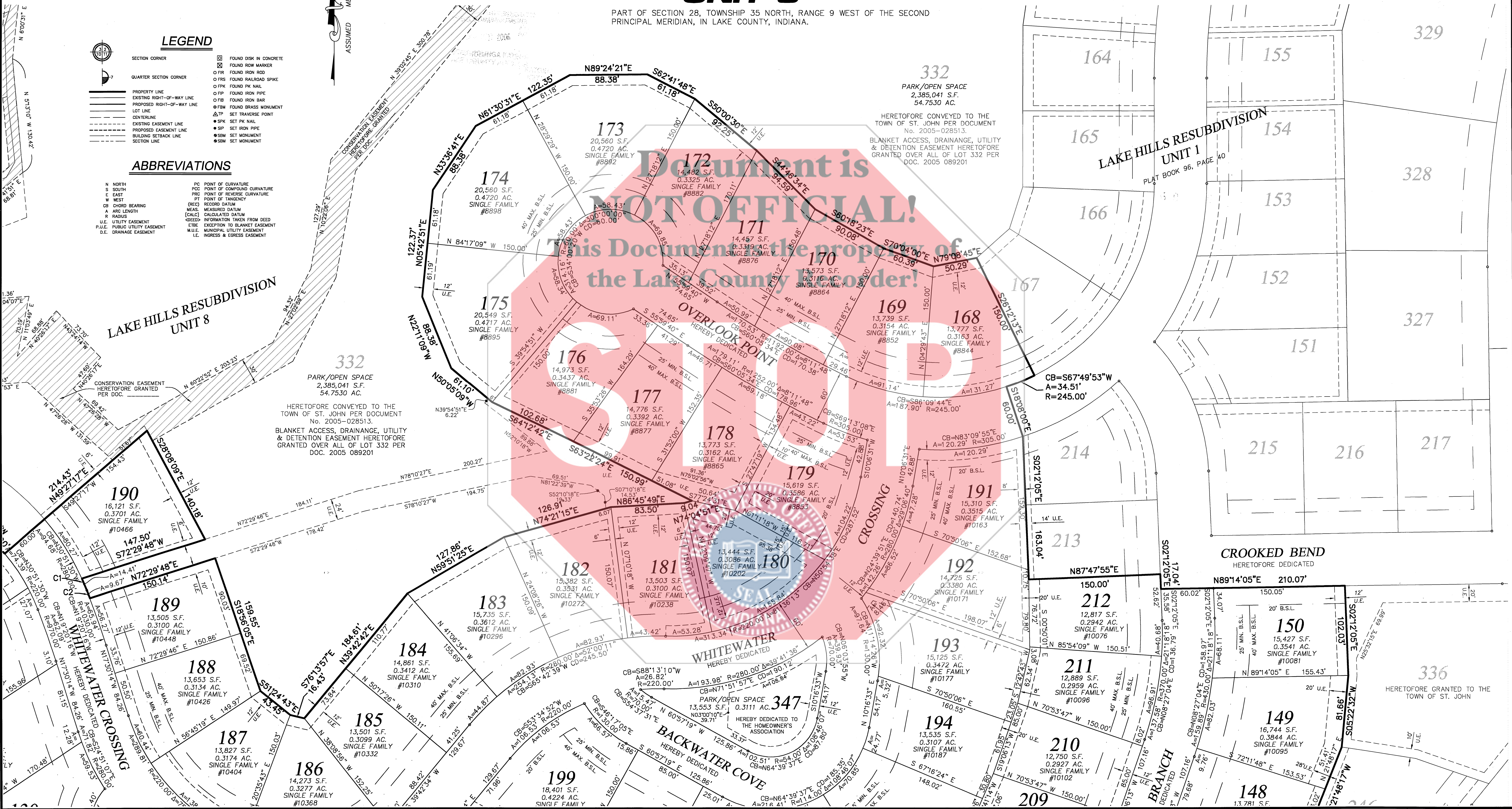
DULY ENTERED FOR TAXATION SUBJECT TO
FINAL ACCEPTANCE FOR TRANSFER
SEP 21 2006
PROV. HOLLINGA KATONA
LAKE COUNTY AUDITOR

LEGEND

- SECTION CORNER
- QUARTER SECTION CORNER
- PROPERTY LINE
- EXISTING RIGHT-OF-WAY LINE
- PROPOSED RIGHT-OF-WAY LINE
- LOT LINE
- CENTERLINE
- EXISTING EASEMENT LINE
- PROPOSED EASEMENT LINE
- BUILDING SETBACK LINE
- SECTION LINE
- FOUND BISH IN CONCRETE
- FOUND IRON MARKER
- FOUND IRON ROD
- FOUND RAILROAD SPIKE
- FOUND PK NAIL
- FOUND IRON PIPE
- FOUND IRON BAR
- FOUND BRASS MONUMENT
- SET TRAVELER POINT
- SET PK NAIL
- SET IRON PIPE
- SET MONUMENT
- SET MONUMENT

ABBREVIATIONS

- N NORTH
- S SOUTH
- E EAST
- W WEST
- CB CHORD BEARING
- A ARC LENGTH
- R RADIUS
- U.E. UTILITY EASEMENT
- P.U.E. PUBLIC UTILITY EASEMENT
- D.E. DRAINAGE EASEMENT
- PC POINT OF CURVATURE
- PCC POINT OF COMPOUND CURVATURE
- PRC POINT OF REVERSE CURVATURE
- PT POINT OF TANGENCY
- REC RECORD DATUM
- MEAS MEASURED DATUM
- CALC CALCULATED DATUM
- DEED INFORMATION TAKEN FROM DEED
- EXE EXCEPTION TO BLANKET EASEMENT
- M.U.E. MUNICIPAL UTILITY EASEMENT
- I.E. INGRESS & EGRESS EASEMENT



V CONSULTANTS
 Engineers
 Scientists
 Surveyors
 7325 Janes Avenue, Suite 100
 Woodridge, IL 60517
 630.724.9200 voice
 630.724.9202 fax
 v3consultants.com

PREPARED FOR:
V3 LAKE HILLS L.L.C.
 7325 JANES AVENUE
 WOODRIDGE, IL 60517
 630.724.9200

REVISIONS	
NO.	DATE

SECONDARY PLAT
LAKE HILLS RESUBDIVISION - UNIT 9

DRAFTING COMPLETED: 10/28/05	DRAWN BY: SPK	PROJECT MANAGER: BA
FIELD WORK COMPLETED: N/A	CHECKED BY: BA	SCALE: 1" = 50'

Project No: 02082
 Group No: V04.8
 SHEET NO.
 2 of 4

STATE OF INDIANA
FILED FOR RECORD
2006 SEP 25 AM 10:32
MICHAEL A. BROWN
RECORDER

GRAPHIC SCALE
1" = 50'

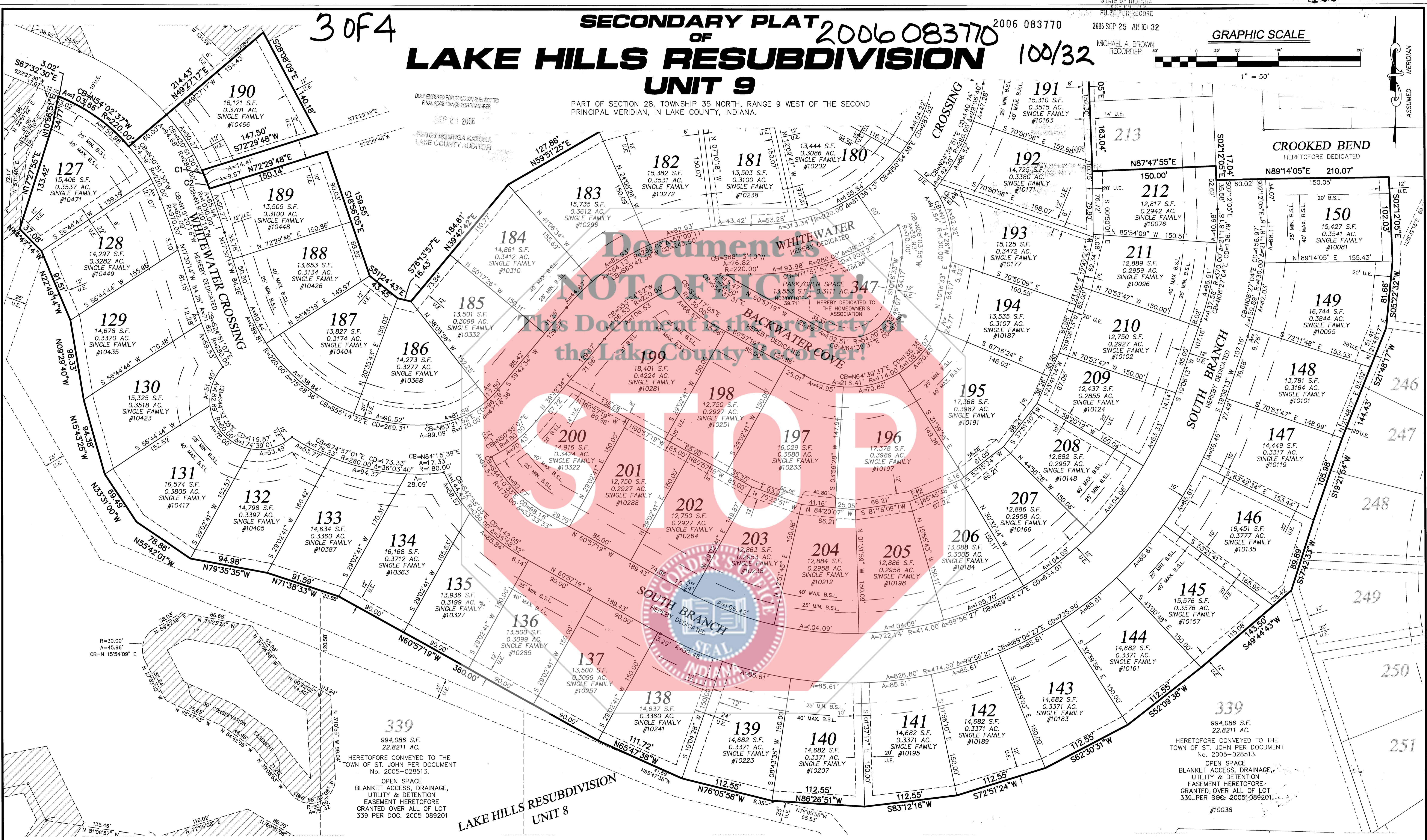
3 OF 4

SECONDARY PLAT OF LAKE HILLS RESUBDIVISION UNIT 9

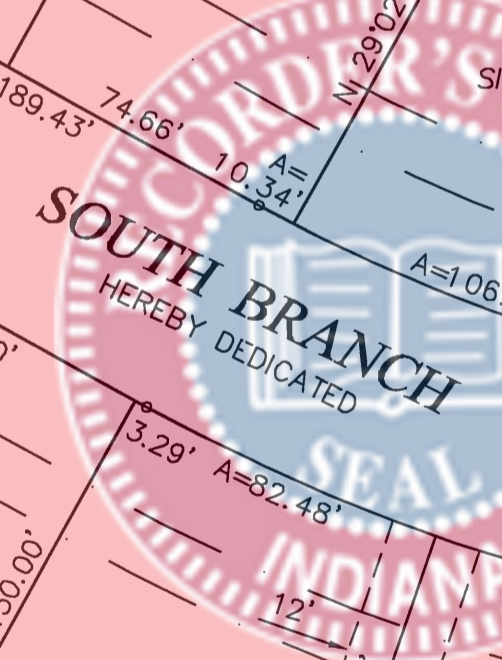
2006 083770
100/32

PART OF SECTION 28, TOWNSHIP 35 NORTH, RANGE 9 WEST OF THE SECOND
PRINCIPAL MERIDIAN, IN LAKE COUNTY, INDIANA.

DAILY ENTERED FOR RECORD SUBJECT TO
FINAL ADJUSTMENT FOR TRANSFER
SEP 21 2006
PEGGY HOUNGA KATONA
LAKE COUNTY AUDITOR

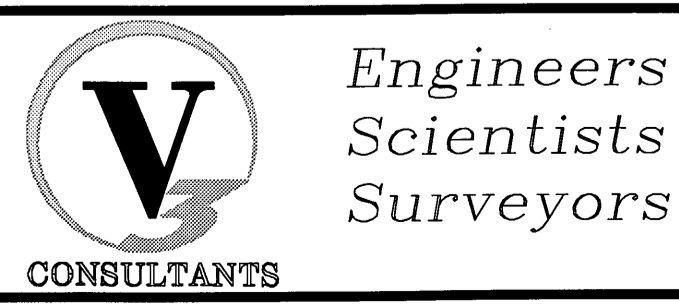


Document is NOT PUBLIC!
This Document is the property of the Lake County Auditor



HERETOFORE CONVEYED TO THE
TOWN OF ST. JOHN PER DOCUMENT
No. 2005-028513.
OPEN SPACE
BLANKET ACCESS, DRAINAGE,
UTILITY & DETENTION
EASEMENT HERETOFORE
GRANTED OVER ALL OF LOT
339 PER DOC. 2005 089201

HERETOFORE CONVEYED TO THE
TOWN OF ST. JOHN PER DOCUMENT
No. 2005-028513.
OPEN SPACE
BLANKET ACCESS, DRAINAGE,
UTILITY & DETENTION
EASEMENT HERETOFORE
GRANTED OVER ALL OF LOT
339 PER DOC. 2005 089201



7325 Janes Avenue, Suite 100
Woodridge, IL 60517
630.724.9200 voice
630.724.9202 fax
v3consultants.com

PREPARED FOR:
V3 LAKE HILLS L.L.C.
7325 JANES AVENUE
WOODRIDGE, IL 60517
630.724.9200

NO.		DATE		DESCRIPTION	

SECONDARY PLAT LAKE HILLS RESUBDIVISION - UNIT 9			
DRAFTING COMPLETED:	10/28/05	DRAWN BY:	SPK
FIELD WORK COMPLETED:	N/A	CHECKED BY:	BA
PROJECT MANAGER:	BA	SCALE:	1" = 50'

Project No: 02082
Group No: V04.8
SHEET NO.
3 of 4

