



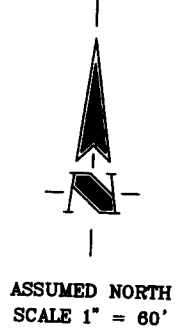
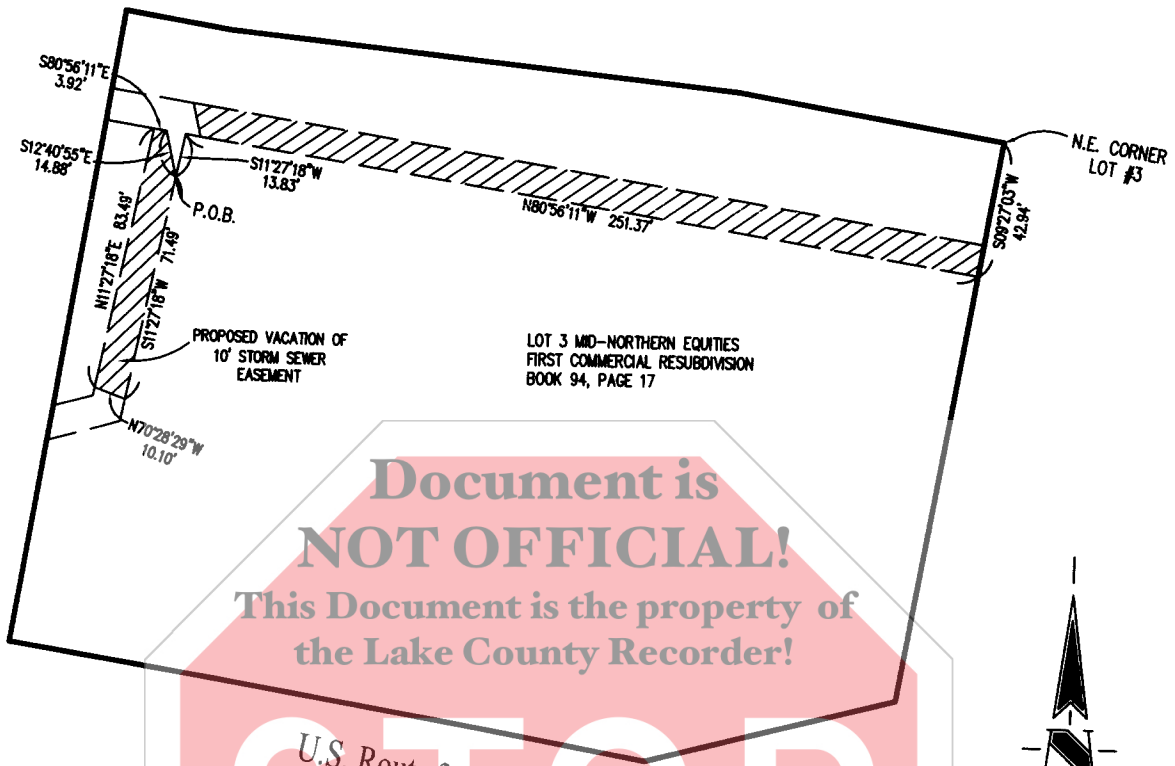


The Schneider Corp.  
 6845 East U.S. 36  
 Suite 500  
 Avon, Indiana  
 46123  
 317-272-0108  
 317-272-0412 FAX

Architecture  
 Civil Engineering  
 Home Builder Services  
 Geotechnical Services  
 GIS \* LIS

Environmental Engineering  
 Interior Design  
 Land Surveying  
 Landscape Architecture  
 Transportation Engineering

EXHIBIT "A"



LAND DESCRIPTION  
 (Vacation Description 2)

A part of Lot numbered 3 of the Final Plat of Mid-Northern Equities First Commercial Resubdivision, as per plat thereof recorded as Instrument #2003-084112, Book 94, Page 17, in the Office of the Recorder of Lake County, Indiana, being more particularly described as follows:

Commencing at the northeast corner of said Lot numbered 3; thence South 09 degrees 27 minutes 03 seconds West (basis of bearing = plat) along the east line of said Lot 3 a distance of 42.94 feet to the south line of an existing 10 foot storm sewer easement as platted; thence North 80 degrees 56 minutes 11 seconds West along said south line a distance of 251.37 feet to an angle point in said storm sewer easement; thence South 11 degrees 27 minutes 18 seconds West along the east line of said easement a distance of 13.83 feet to the Point of Beginning; thence continuing South 11 degrees 27 minutes 18 seconds West along said east line a distance of 71.49 feet; thence North 70 degrees 28 minutes 29 seconds West a distance of 10.10 feet to the west line of said easement; thence North 11 degrees 27 minutes 18 seconds East along said west line a distance of 83.49 feet to a point on the south line of said easement; thence South 80 degrees 56 minutes 11 seconds East along said south line a distance of 3.92 feet; thence South 12 degrees 40 minutes 55 seconds East a distance of 14.88 feet to the Point of Beginning, containing 802 square feet, 0.02 acres, more or less.

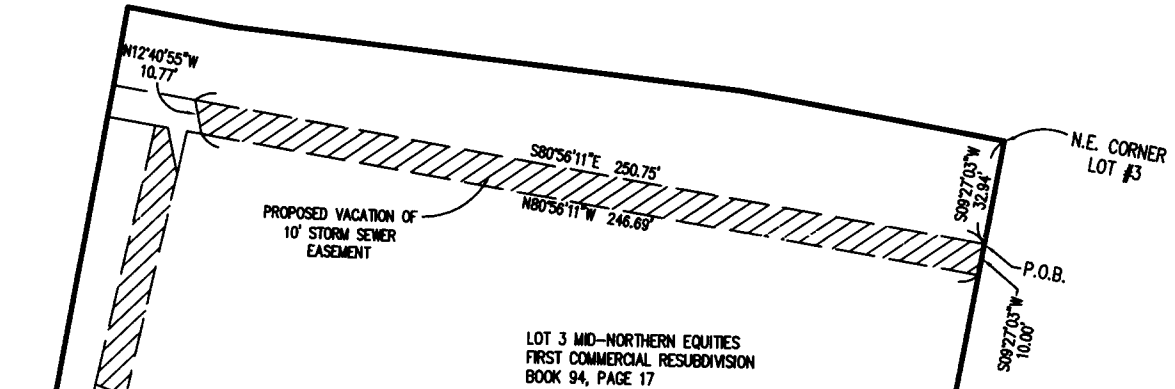


The Schneider Corp.  
 6845 East U.S. 36  
 Suite 500  
 Avon, Indiana  
 46123  
 317-272-0108  
 317-272-0412 FAX

Architecture  
 Civil Engineering  
 Home Builder Services  
 Geotechnical Services  
 GIS \* LIS

Environmental Engineering  
 Interior Design  
 Land Surveying  
 Landscape Architecture  
 Transportation Engineering

EXHIBIT "B"



Document is  
**NOT OFFICIAL!**  
 This Document is the property of  
 the Lake County Recorder!



ASSUMED NORTH  
 SCALE 1" = 60'

LAND DESCRIPTION  
 (Vacation Description 1)

A part of Lot numbered 3 of the Final Plat of Mid-Northern Equities First Commercial Resubdivision, as per plat thereof recorded as Instrument #2003-084112, Book 94, Page 17, in the Office of the Recorder of Lake County, Indiana, being more particularly described as follows:

Commencing at the northeast corner of said Lot numbered 3; thence South 09 degrees 27 minutes 03 seconds West (basis of bearing = plat) along the east line of said Lot 3 a distance of 32.94 feet to the Point of Beginning; thence continuing South 09 degrees 27 minutes 03 seconds West along said east line a distance of 10.00 feet to the south line of an existing 10 foot storm sewer easement as platted; thence North 80 degrees 56 minutes 11 seconds West along said south line a distance of 246.69 feet; thence North 12 degrees 40 minutes 55 seconds West a distance of 10.77 feet to the north line of said platted 10 foot storm sewer easement; thence South 80 degrees 56 minutes 11 seconds East a distance of 250.75 feet to the Point of Beginning, containing 2,487 square feet, 0.06 acres, more or less.

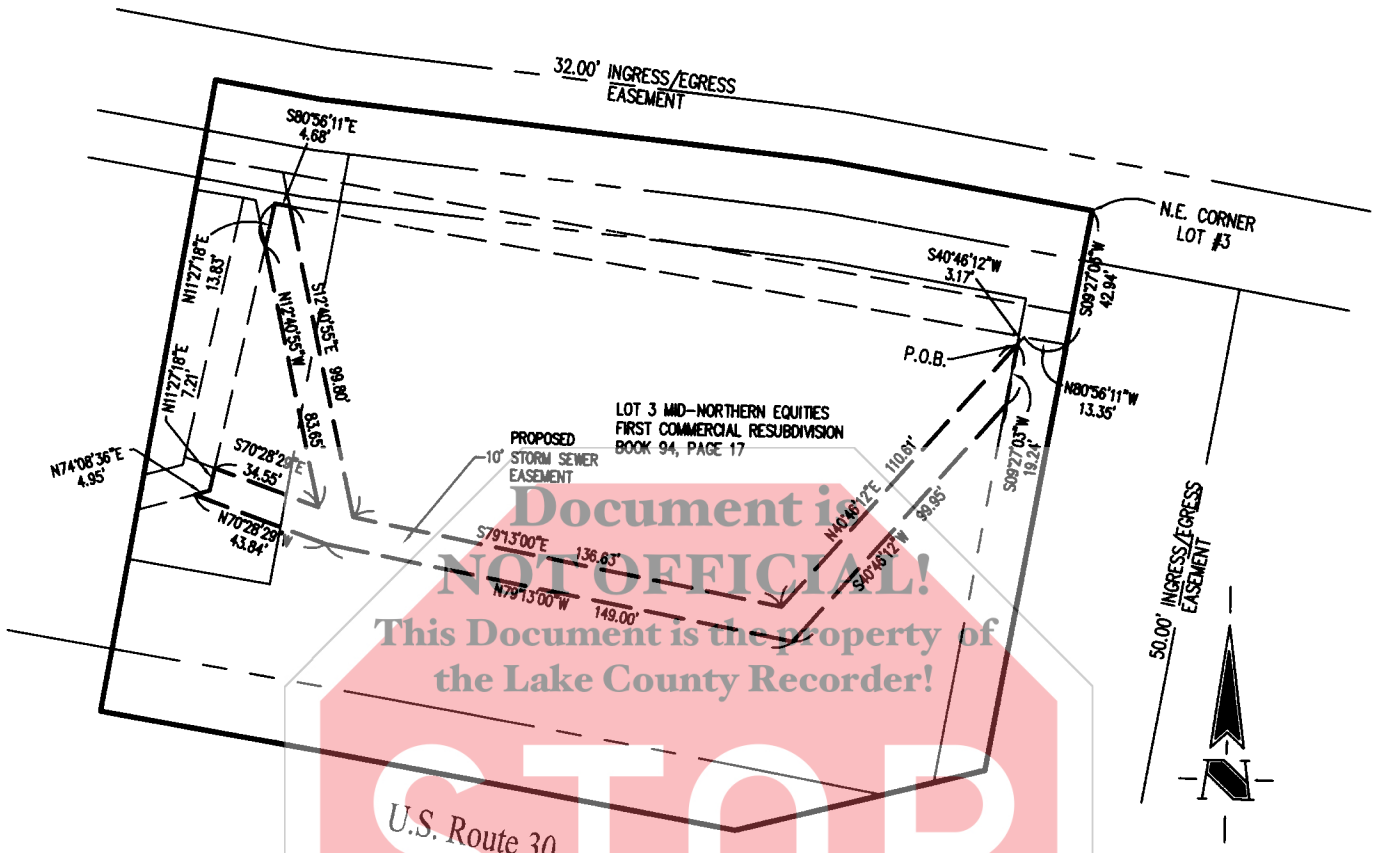


The Schneider Corp.  
 6845 East U.S. 36  
 Suite 500  
 Avon, Indiana  
 46123  
 317-272-0108  
 317-272-0412 FAX

Architecture  
 Civil Engineering  
 Home Builder Services  
 Geotechnical Services  
 GIS \* LIS

Environmental Engineering  
 Interior Design  
 Land Surveying  
 Landscape Architecture  
 Transportation Engineering

EXHIBIT "C"



LAND DESCRIPTION  
 (Proposed 10 foot wide Storm Sewer Easement)

A part of Lot numbered 3 of the Final Plat of Mid-Northern Equities First Commercial Resubdivision, as per plat thereof recorded as Instrument #2003-084112, Book 94, Page 17, in the Office of the Recorder of Lake County, Indiana, being more particularly described as follows:

Commencing at the northeast corner of said Lot numbered 3; thence South 09 degrees 27 minutes 03 seconds West (basis of bearing = plat) along the east line of said Lot 3 a distance of 42.94 feet; thence North 80 degrees 56 minutes 11 seconds West a distance of 13.35 feet; thence South 40 degrees 46 minutes 12 seconds West a distance of 3.17 feet to the Point of Beginning, said point being on an east line of a 15 foot public utility easement as platted; thence South 09 degrees 27 minutes 03 seconds West along said east line a distance of 19.24 feet; thence South 40 degrees 46 minutes 12 seconds West a distance of 99.95 feet; thence North 79 degrees 13 minutes 00 seconds West a distance of 149.00 feet; thence North 70 degrees 28 minutes 29 seconds West a distance of 43.84 feet to a point on a southeast line of a 10 foot storm sewer easement as platted; thence North 74 degrees 08 minutes 36 seconds East along said southeast line a distance of 4.95 feet to an angle point in said easement; thence North 11 degrees 27 minutes 18 seconds East along the east line of said easement a distance of 7.21 feet; thence North 11 degrees 27 minutes 18 seconds East along said east line a distance of 34.55 feet; thence North 12 degrees 40 minutes 55 seconds West a distance of 83.65 feet to a point on the south line of said easement; thence South 80 degrees 56 minutes 11 seconds East along said south line a distance of 4.68 feet; thence South 12 degrees 40 minutes 55 seconds East a distance of 99.80 feet; thence South 79 degrees 13 minutes 00 seconds East a distance of 136.63 feet; thence North 40 degrees 46 minutes 12 seconds East a distance of 110.61 feet to the Point of Beginning, containing 3,866 square feet,

ASSUMED NORTH  
 SCALE 1" = 60'