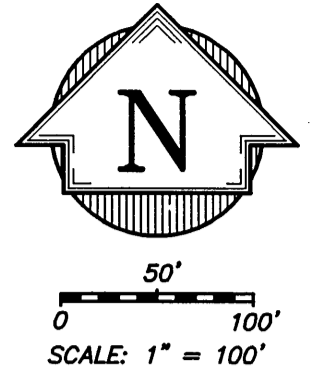


# PLAT OF VACATION

OF PART OF  
**SOUTH CREEK DRIVE**  
DESCRIBED AS:



That part of South Creek Drive dedicated by Three Creeks Subdivision Unit 1, being a subdivision, as recorded in Plat Book 85, Page 54, in the Southeast 1/4 of the Northeast 1/4 of Section 19, Township 35 North, Range 7 West of the Second Principal Meridian, lying West of the West line of Indiana Route 51, as dedicated in said Three Creeks Subdivision Unit 1, all in Lake County, Indiana.

**FILED**

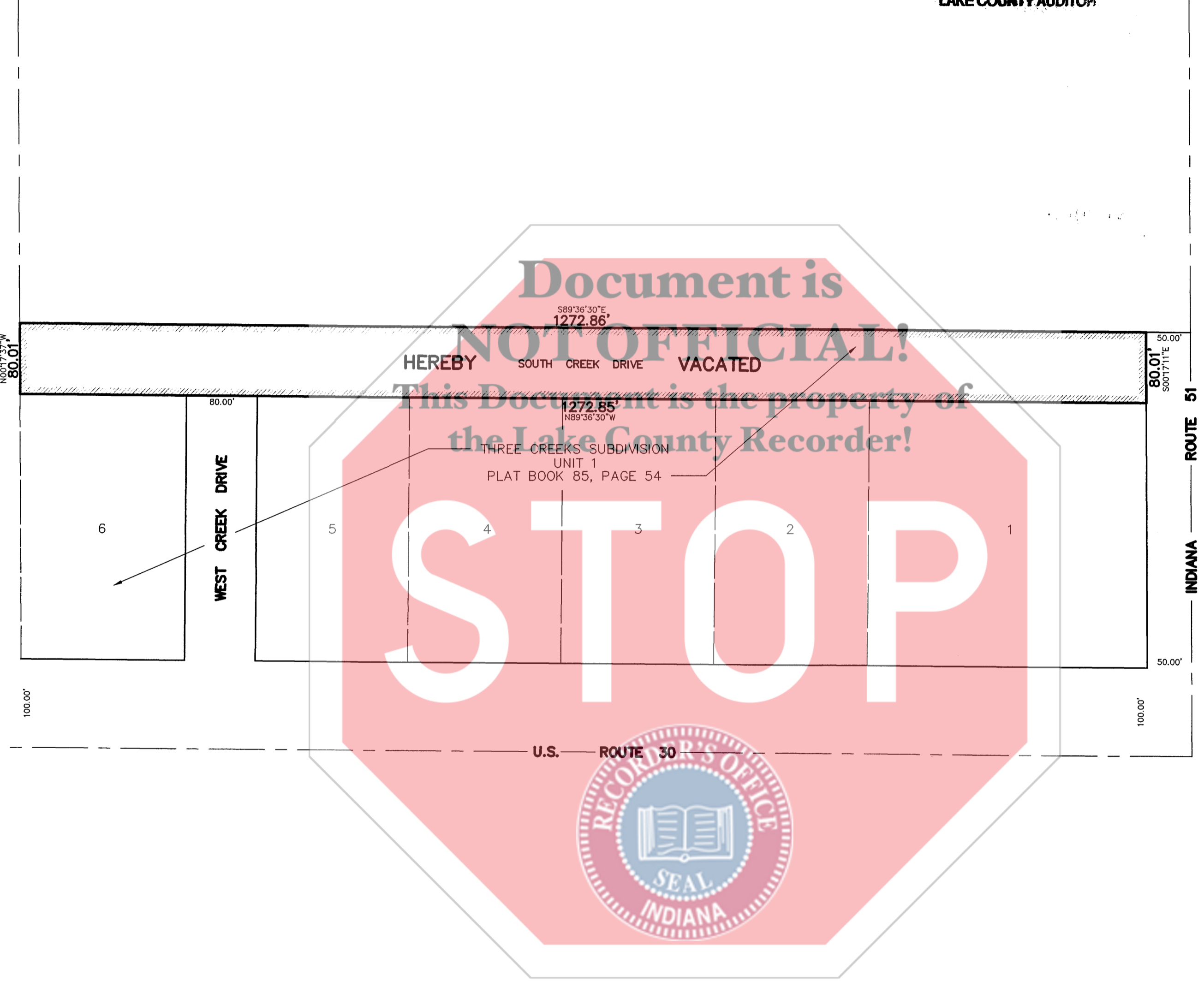
JAN 12 2005  
STEPHEN R. STIGLICH  
LAKE COUNTY AUDITOR

BOOK  
**096** PAGE  
**65**

2005 002193

STATE OF INDIANA  
LAKE COUNTY  
FILED FOR RECORD  
2005 JAN 12 AM 10:43  
MICHAEL A. ...  
RECORDER

Handwritten initials: "Kobza"



State of Indiana) s.s.  
County of Lake)

We the undersigned members of the Board of Works of the City of Hobart, Lake County, Indiana, certify that this Plat of Vacation was duly acted upon and approved at a meeting held on the

7th day of January, 2005

Linda M. Buzinec  
Linda M. Buzinec

Richard L. Kobza  
Richard Kobza

Hilario Barrasas  
Hilario Barrasas

State of Illinois) s.s.  
County of Cook)

We, EDMUND M. BURKE ENGINEERING, LTD., do hereby certify that we have prepared the plat hereon drawn of the property described in the above caption for the purpose of vacating part of an existing street, all of which is shown on the plat hereon drawn. Distances are shown in feet and decimal parts thereof. Said property lies within the corporate limits of the City of Hobart, Indiana.

Dated at Country Club Hills, Illinois, this 12th day of August, A.D. 2004.

Donald R. Smith  
DONALD R. SMITH, INDIANA PROFESSIONAL LAND SURVEYOR NO. LS-29800014

