

620039226

SITE PLAN THE GALLERIA IN DYER CONDOMINIUM

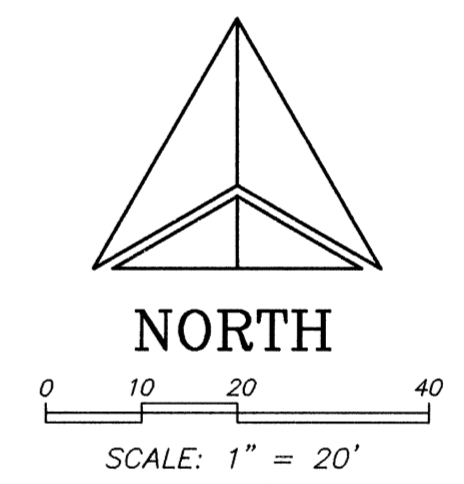
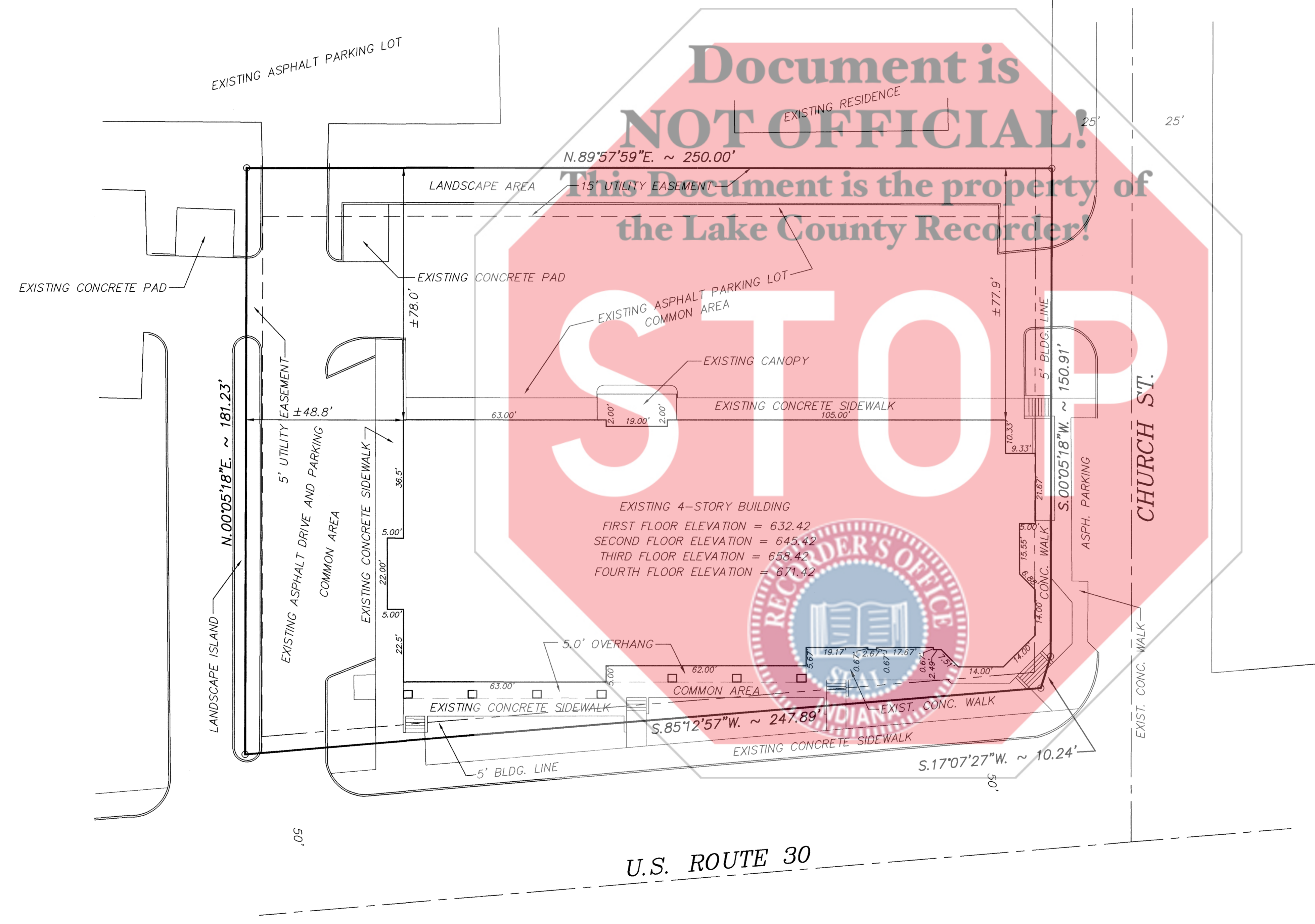
DESCRIPTION: LOT 1, GALLERIA, AN ADDITION TO THE TOWN OF DYER, INDIANA, AS SHOWN IN PLAT BOOK 86, PAGE 87, IN THE OFFICE OF THE RECORDER OF LAKE COUNTY, INDIANA, AS AMENDED BY CERTIFICATE OF CORRECTION DATED MARCH 23, 2001, AND RECORDED MARCH 26, 2001, AS DOCUMENT #021322.

2003-113081
2003 OCT 21
94-55
AUD: 480
p1 of 3

UNIT NUMBER	AREA (SQUARE FEET)
116	1737
119	1765
123	3032
127	2743
211	2001
212	3389
215	1014
217	593
217B	379
218	1875
219	1081
300	1383
309	534
311	944
312	2613
318	1101
320	2381
323	1627
325	1139
400	5197
410	743
425	3440
TOTAL	40711

FILED
OCT 15 2003
KEYS 14-294-17022
STEPHEN R. STIGLICH
LAKE COUNTY AUDITOR

EACH CONDOMINIUM UNIT SHALL CONSIST OF THE SPACE ENCLOSED AND BOUNDED BY THE PLANES DEFINED BY THE FINISHED INTERIOR SURFACES OF THE PERIMETER WALLS AND CEILING AND THE TOP SURFACE OF THE CONCRETE FLOOR BELOW THE FINISHED FLOOR COVERING, AS SHOWN ON THESE PLANS, INCLUDING THE FIXTURES AND IMPROVEMENTS LOCATED WHOLLY WITHIN SAID BOUNDARIES AND EXCLUDING THE STRUCTURAL PARTS OF THE BUILDING.



LAND TECHNOLOGIES, INC.
CIVIL ENGINEERING & LAND SURVEYING
7325 Mallard Lane Schererville, Indiana 46375
PHONE: (219) 769-7728 FAX: (219) 769-7731

EXHIBIT "A"
SITE PLAN
THE GALLERIA IN DYER CONDOMINIUM
425 U.S. HWY. 30, DYER, IN

NO.	DATE	REVISIONS	REMARKS
1	07/27/01	REVISION	AREAS IN TABLE
2	12/27/01	REVISION	AREAS IN TABLE
3	02/27/02	REVISION	AREAS IN TABLE
4	07/17/02	REVISION	AREAS IN TABLE
5	09/16/03	REVISION	AREAS IN TABLE

DATE: 04/10/01
FIELD BOOK:
CLIENT: GALLERIA
JOB NO: 76-01
SHEET NO: 1 OF 3
FILE NO: 4-50.0

STATE OF INDIANA)
COUNTY OF LAKE) SS

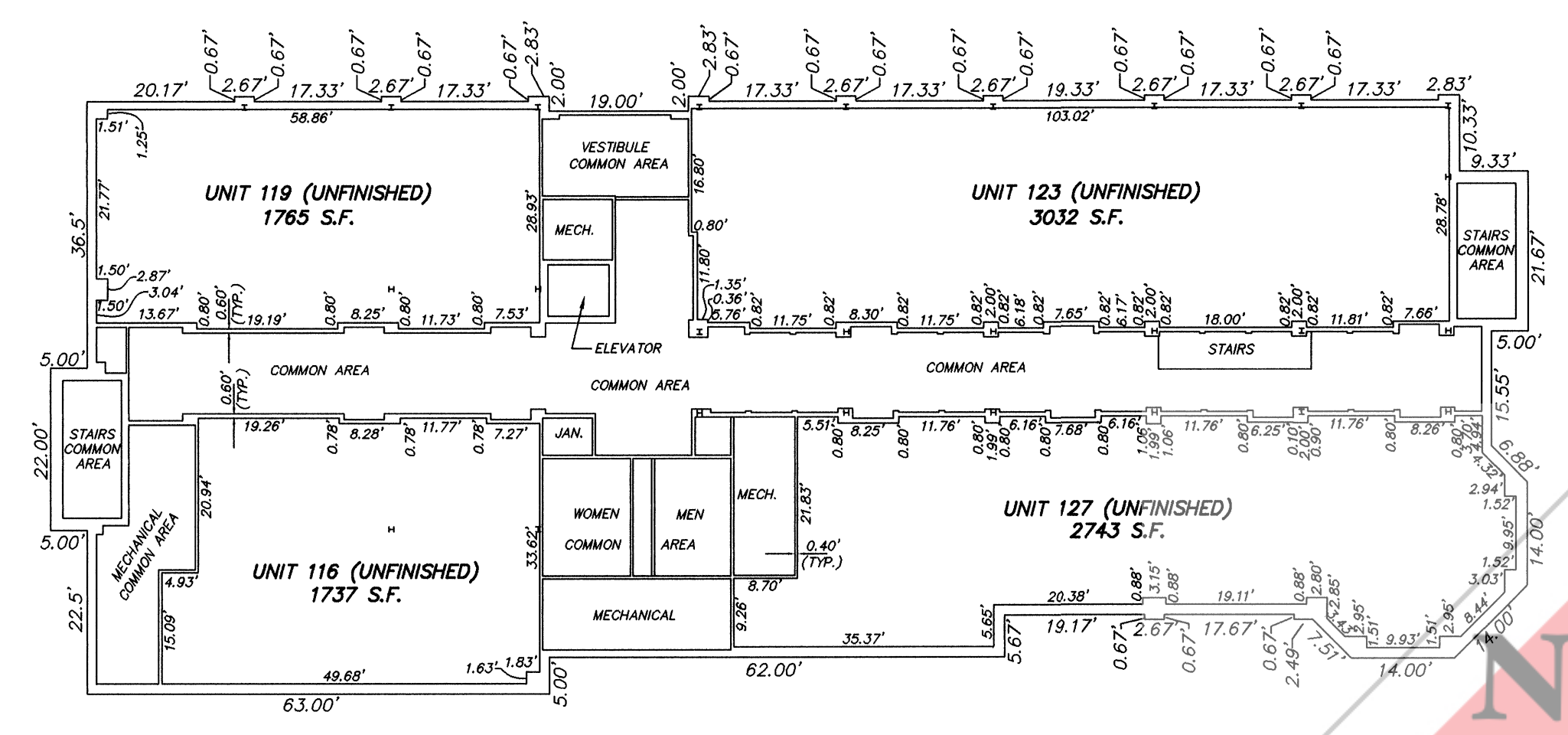
I, JOHN E. BULLOCK, DO HEREBY CERTIFY THAT I AM A REGISTERED LAND SURVEYOR LICENSED IN THE STATE OF INDIANA, AND THAT THIS PLAN IS A TRUE, CORRECT, AND ACCURATE "AS-BUILT" SURVEY OF THE PROPERTY KNOWN AS THE GALLERIA IN DYER CONDOMINIUM.

DATED THIS 15TH DAY OF SEPT. 2003.

John E. Bullock
JOHN E. BULLOCK - INDIANA LAND SURVEYOR NO. S0512



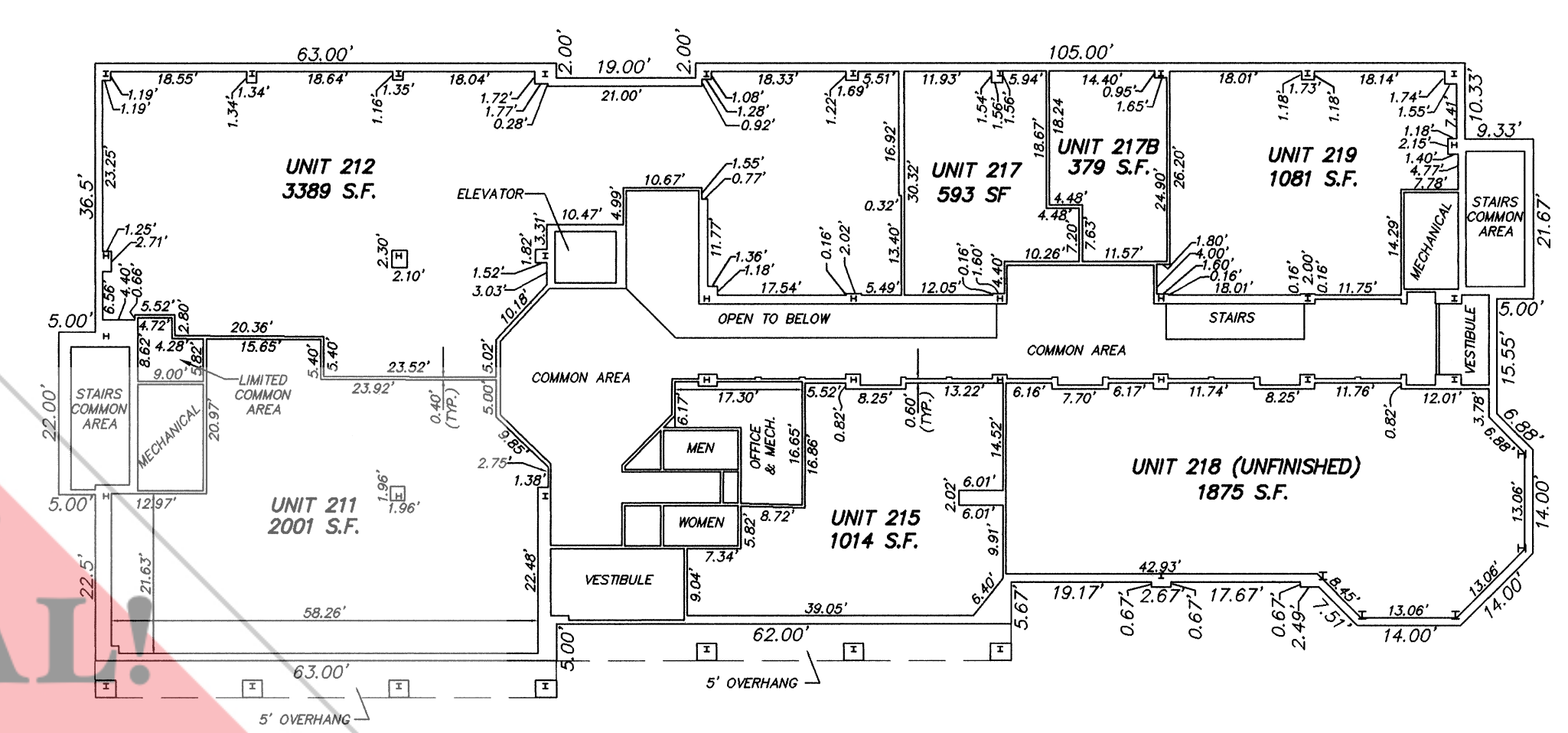
FIRST FLOOR PLAN THE GALLERIA IN DYER CONDOMINIUM



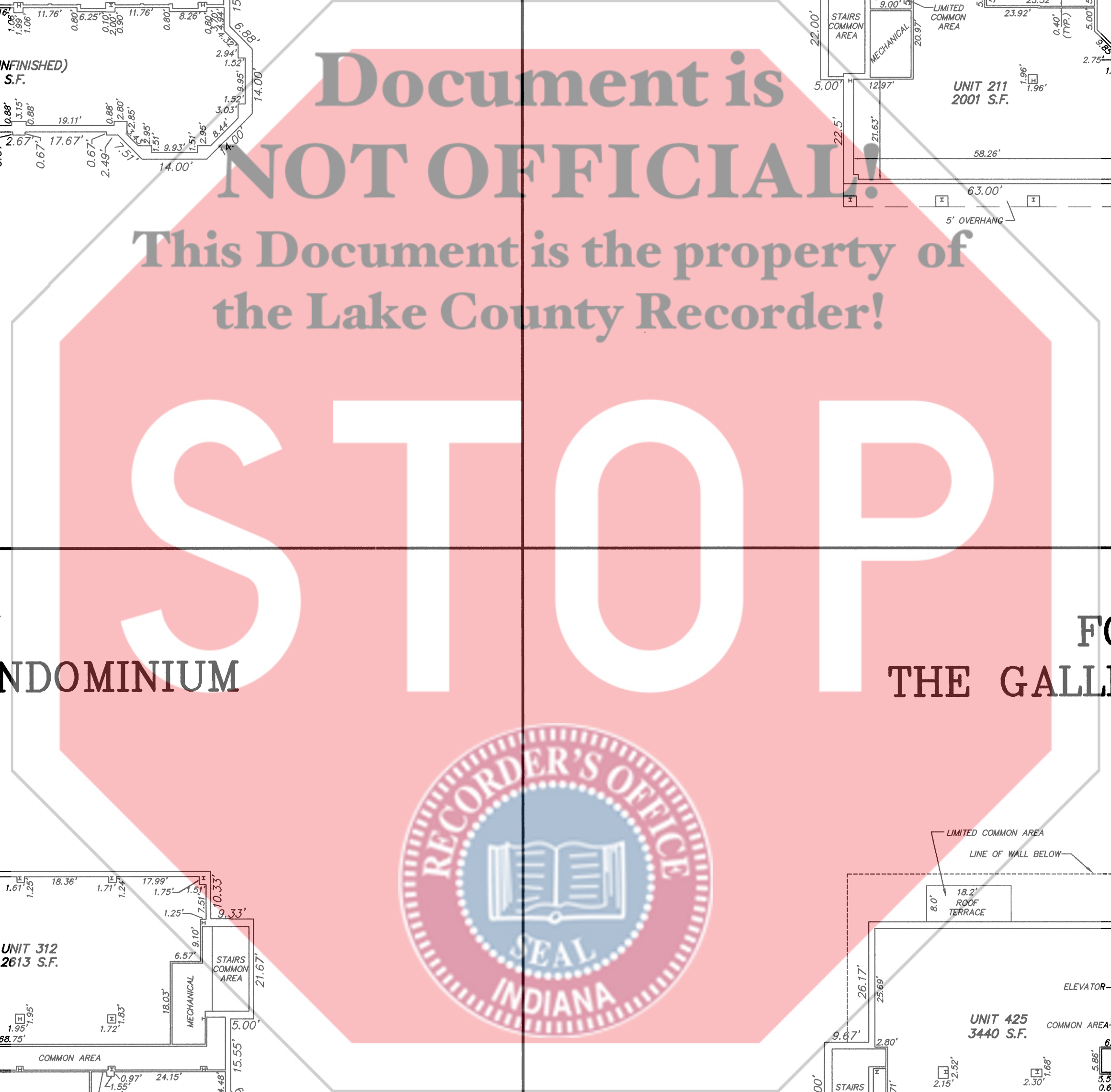
FLOOR ELEVATION = 632.42'

2003-113081
2003 OCT 21
94-55
P2 of 3
AUG:480

SECOND FLOOR PLAN THE GALLERIA IN DYER CONDOMINIUM

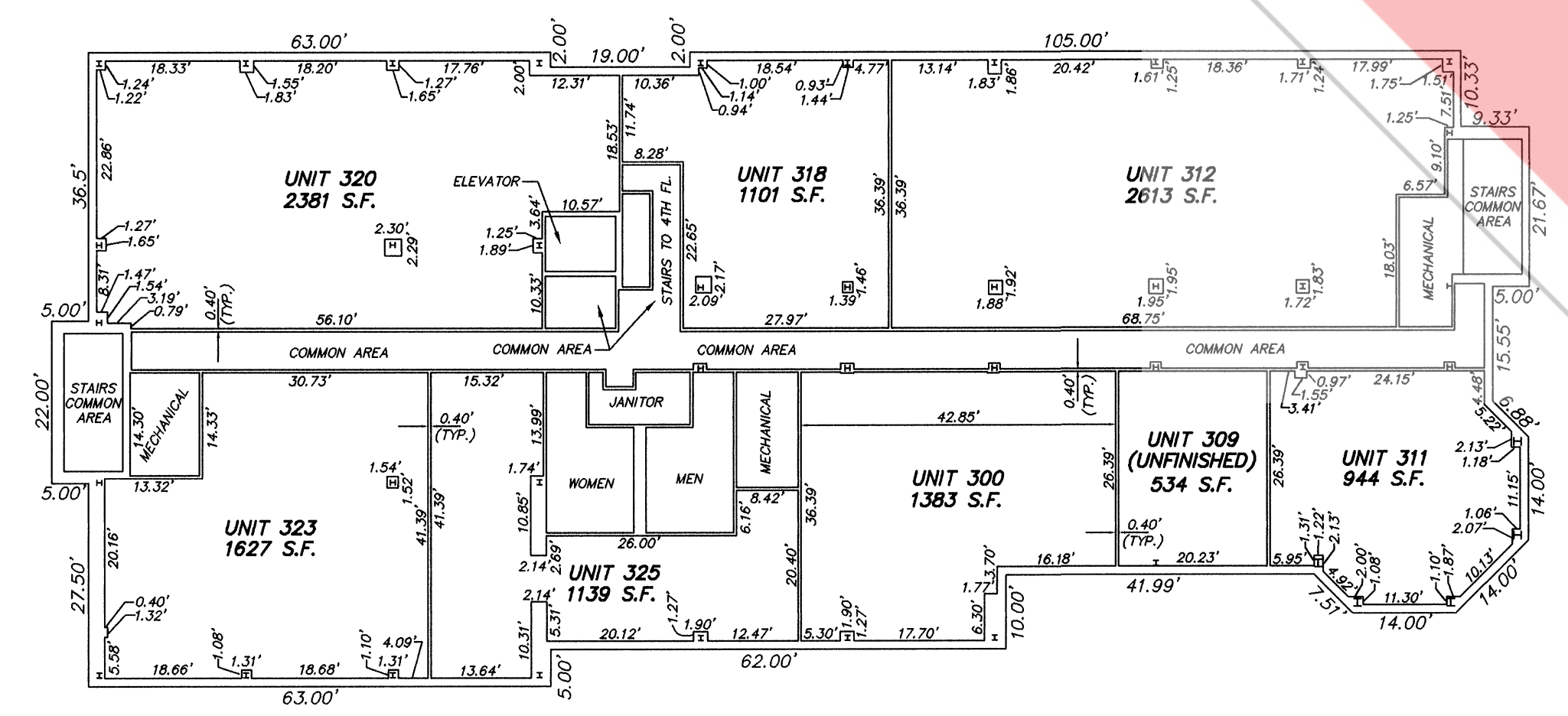


FLOOR ELEVATION = 645.42'



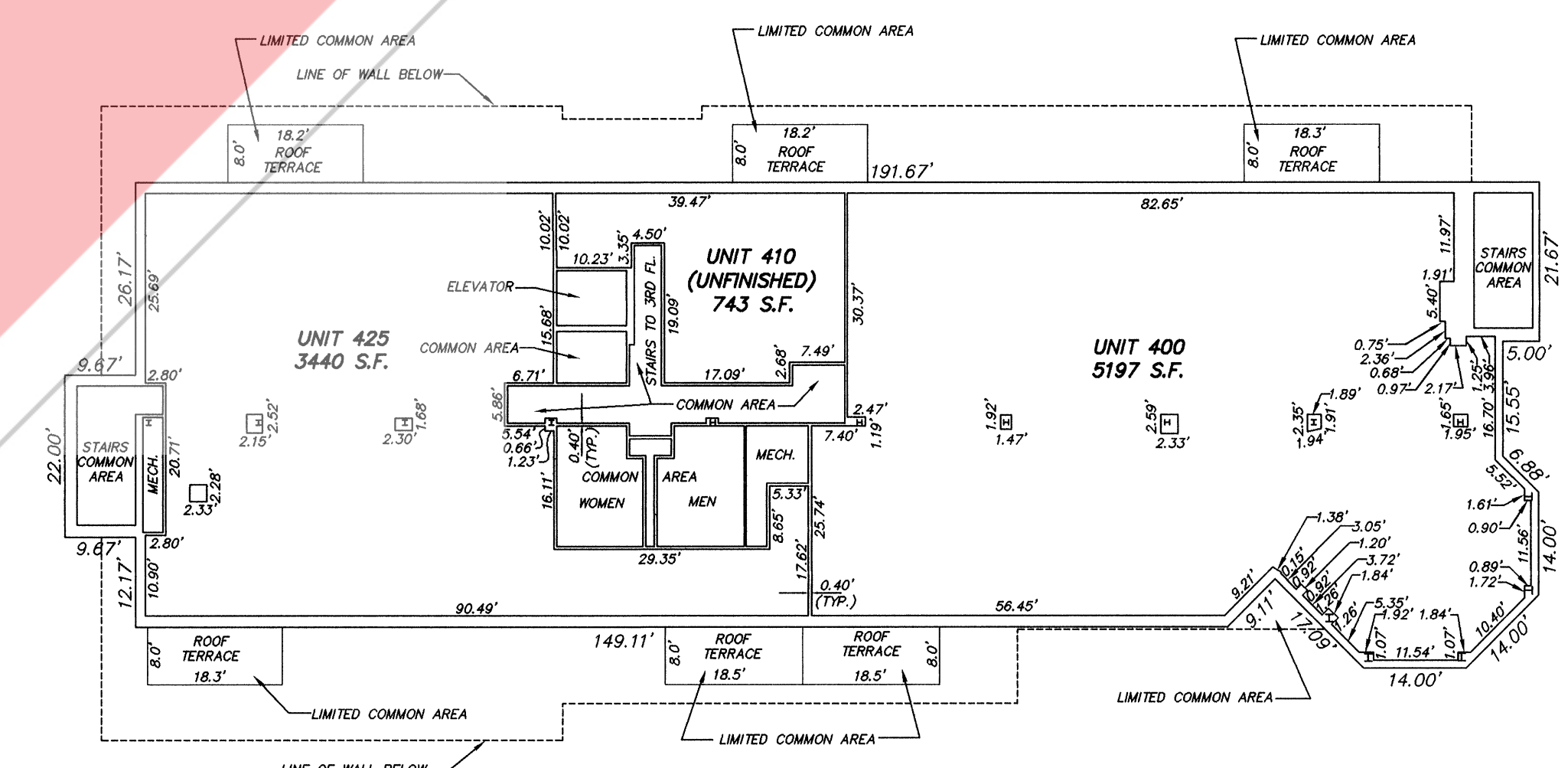
FILED
OCT 15 2003
SEVEN 14-294-174 21
STEPHEN R. STIGLICH
LAKE COUNTY AUDITOR

THIRD FLOOR PLAN THE GALLERIA IN DYER CONDOMINIUM



FLOOR ELEVATION = 658.42'

FOURTH FLOOR PLAN THE GALLERIA IN DYER CONDOMINIUM



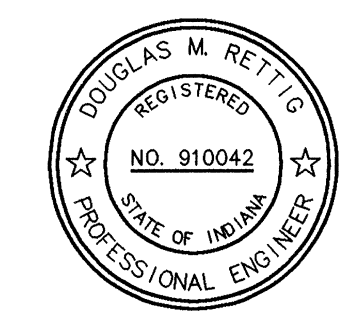
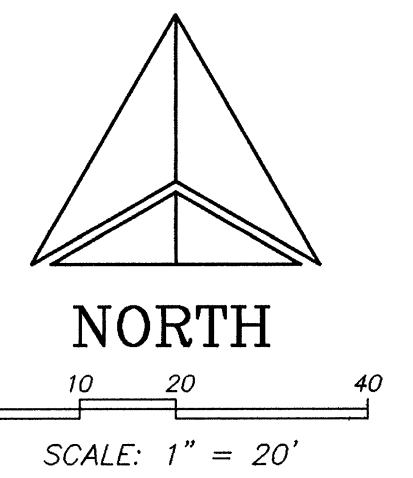
FLOOR ELEVATION = 671.42'
CEILING ELEVATION = 679.42'

STATE OF INDIANA)
COUNTY OF LAKE) SS

I, DOUGLAS M. RETTIG, DO HEREBY CERTIFY THAT I AM A REGISTERED PROFESSIONAL ENGINEER LICENSED IN THE STATE OF INDIANA, BEING REGISTRATION NUMBER 910042 AND THAT THIS PLAN IS A TRUE, CORRECT, AND ACCURATE REPRESENTATION OF THE BUILDING KNOWN AS THE GALLERIA IN DYER CONDOMINIUM AND THE SAME TRULY, CORRECTLY AND ACCURATELY DEPICTS THE LAYOUT, LOCATION, UNIT NUMBERS, DIMENSIONS OF THE UNITS AND FLOOR ELEVATIONS OF THE GALLERIA IN DYER CONDOMINIUM AS BUILT.

DATED THIS 15TH DAY OF SEPTEMBER, 2003.

Douglas M. Rettig
DOUGLAS M. RETTIG - INDIANA PROFESSIONAL ENGINEER NO. 910042



LAND TECHNOLOGIES, INC.
CIVIL ENGINEERING & LAND SURVEYING
7325 Mallard Lane Schererville, Indiana 46375
PHONE: (219) 769-7728 FAX: (219) 769-7731

EXHIBIT "A"
FLOOR PLANS
THE GALLERIA IN DYER CONDOMINIUM
425 U.S. HWY. 30, DYER, IN

NO.	DATE	REVISIONS
1	07/20/03	REVISED 3RD & 4TH FLOOR
2	12/27/03	ADDED UNIT 300
3	02/27/04	REVISED UNIT 212 - 214
4	07/19/02	REV. UNIT 215, 216, 309, 311, 316
5	07/19/02	REV. UNIT 217, 218, 312, 318, 322
6	09/15/03	REV. UNIT 217, 218, 312, 318, 322

DATE: 04/05/01
FIELD BOOK:
CLIENT: GALLERIA
JOB NO: 76-01
SHEET NO: 2 OF 3
FILE NO: 4-50.0