

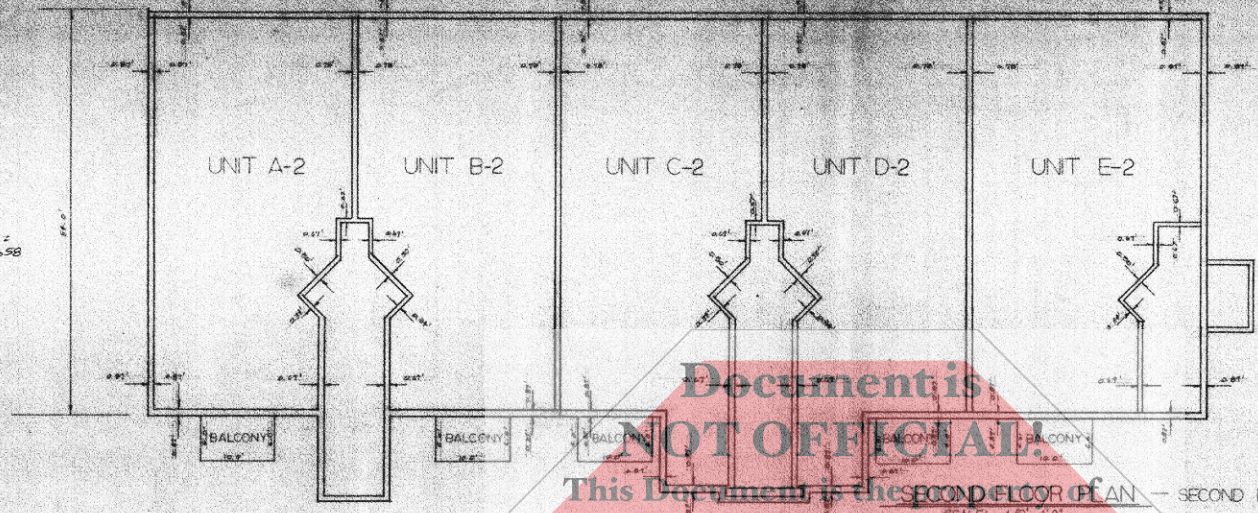
1255000 Rev. 01 Page 36
Instrument Number: 2002-04959
SEMPER PARATI: CONSTRUCTION
Plan in the State of Indiana, 1/20/02 at Lake
By Recorder: MORRIS W. CARTER

1800
12/01

BUILDING NUMBER 11

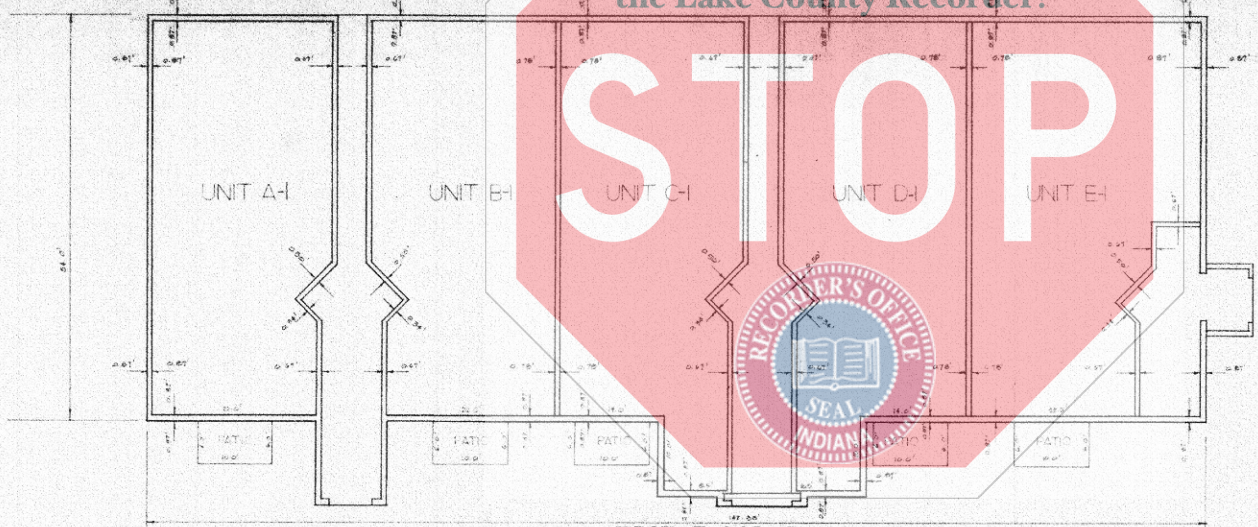
FILED

JAN 25 2002
KEY 27-G-28-49 p.58
PETER BENJAMIN
LAKE COUNTY AUDITOR

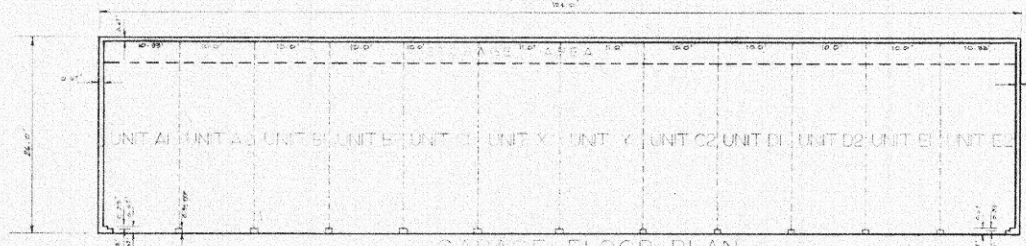


Document is
NOT OFFICIAL!
This Document is the property of
the Lake County Recorder!

SCALE: 1/8" = 1'-0"



FIRST FLOOR PLAN — FIRST FLOOR ELEV. = 616.15



GARAGE FLOOR PLAN
SCALE: 1/8" = 1'-0"

NOTES:

1. The horizontal boundaries of each Unit are the planes formed by the interior surface of the unfinished dry-wall ceiling above and abutting the Unit, and the planes formed by the interior top surfaces of the unfinished dry-wall of the boundary walls of each Unit.
2. The vertical boundaries of each Unit are the planes formed by the interior surfaces of the unfinished dry-wall of the boundary walls of each Unit.
3. The patios and balconies are Limited Common Areas for the exclusive use of Occupants of Units to which such patio or balcony is attached.
4. The garage parking areas and storage areas are Limited Common Areas for the exclusive use of occupants of the designated Units.

EXHIBIT 'A' SHEET 1 OF 1

SCALE:	DATE:	REVISIONS BY:	DATE: