

Mail tax bills to:

53 W. Jackson Boulevard
Chicago, IL 60604

WARRANTY DEED

485735 Pdg 6286

Chicago Title Insurance Company

4

THIS INDENTURE WITNESSETH, that GARY WORKS SUPERVISOR'S CLUB, INCORPORATED, of Lake County in the State of Indiana CONVEYS AND WARRANTS to SCHEMA DEVELOPMENT COMPANY, INC., an Illinois Corporation, in consideration of Ten (\$10.00) Dollars and other valuable consideration, the receipt and sufficiency of which are hereby acknowledged, the following described real estate in Lake County, in the State of Indiana:

SEE ATTACHED EXHIBIT A, which is incorporated herein as if fully set forth.

SUBJECT TO:

1. Any and all taxes, including real estate taxes.
2. Any and all easements and restrictions of record.
3. Any and all matters of public record.

DATED this 11th day of APRIL, 1996.

96023759

The undersigned person executing this deed represents and certifies on behalf of the Grantor, that the undersigned is a duly elected officer of the Grantor and has been fully empowered by proper resolution, of the by-laws of the Grantor, to execute and deliver this deed; that the Grantor is a corporation in good standing in the State of its origin and, where required, in the State where the subject real estate is situate; that the Grantor has full corporate capacity to convey the real estate described; and that all necessary corporate action for the making of this conveyance has been duly taken.

GARY WORKS SUPERVISOR'S CLUB, INCORPORATED

By: John F. Pleva
John F. PLEVA PRESIDENT

ATTEST:
Richard J. Cardetti
RICHARD J. CARDETTI VICE-PRES
Officer

FULLY ENTERED FOR TAXATION SUBJECT TO FINAL ACCEPTANCE FOR TRANSFER.

APR 12 1996

AUDITOR LAKE COUNTY

STATE OF INDIANA
COUNTY OF Lake SS:

Before, the undersigned, a Notary Public in and for said County and State, this 11 day of April, 1996, personally appeared John Pleva Richard Cardetti and acknowledged the execution of the foregoing deed. In witness whereof, I have hereunto subscribed my name and affixed my official seal.

[Signature]
Signature

Greg A. Bower
Printed Name

My Commission Expires: 10-19-96
Resident of Lake County

This instrument prepared by: GREG A. BOUWER, Attorney at Law, SPANGLER, JENNINGS & DOUGHERTY, P.C., 8396 Mississippi Street, Merrillville, Indiana 46410

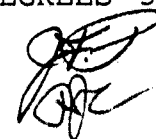
000566

[Handwritten initials]

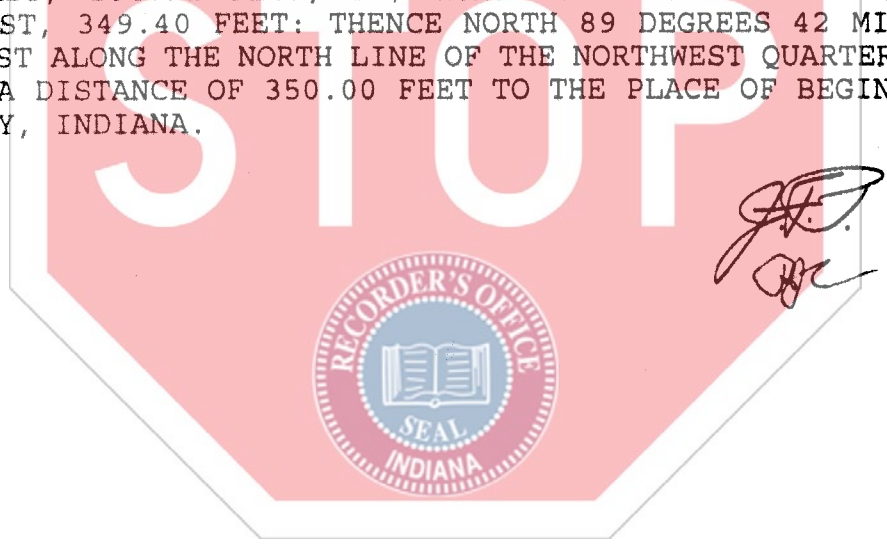
EXHIBIT A

LEGAL DESCRIPTION PARCEL 2

THAT PART OF THE NORTH HALF OF SECTION 9, TOWNSHIP 35 NORTH, RANGE 7 WEST OF THE SECOND PRINCIPAL MERIDIAN DESCRIBED AS FOLLOWS:
COMMENCING AT A FOUND IRON ROD AT THE NORTH QUARTER CORNER OF SAID SECTION 9; THENCE SOUTH 89 DEGREES 42 MINUTES 23 SECONDS WEST ALONG THE NORTH LINE OF THE NORTHWEST QUARTER OF SAID SECTION 9 A DISTANCE OF 155.95 FEET FOR A PLACE OF BEGINNING; THENCE ALONG A LINE COINCIDENT WITH THE NEXT SEVENTEEN (17), COURSES AND DISTANCES: 1) SOUTH 00 DEGREES 29 MINUTES 10 SECONDS EAST, 316.18 FEET; 2) SOUTH 56 DEGREES 29 MINUTES 59 SECONDS WEST, 115.88 FEET; 3) SOUTH 28 DEGREES 49 MINUTES 23 SECONDS WEST, 149.26 FEET; 4) SOUTH 40 DEGREES 51 MINUTES 17 SECONDS WEST, 116.58 FEET; 5) SOUTH 28 DEGREES 15 MINUTES 13 SECONDS WEST, 45.18 FEET; 6) SOUTH 04 DEGREES 37 MINUTES 27 SECONDS WEST, 62.13 FEET; 7) SOUTH 11 DEGREES 00 MINUTES 01 SECONDS EAST, 88.71 FEET; 8) SOUTH 23 DEGREES 42 MINUTES 48 SECONDS EAST, 44.62 FEET; 9) SOUTH 43 DEGREES 22 MINUTES 40 SECONDS EAST, 61.69 FEET; 10) SOUTH 73 DEGREES 06 MINUTES 34 SECONDS EAST, 41.15 FEET; 11) NORTH 84 DEGREES 37 MINUTES 34 SECONDS EAST, 85.11 FEET; 12) NORTH 77 DEGREES 01 MINUTES 09 SECONDS EAST, 64.52 FEET; 13) NORTH 82 DEGREES 24 MINUTES 33 SECONDS EAST, 55.32 FEET; 14) NORTH 84 DEGREES 48 MINUTES 19 SECONDS EAST, 65.89 FEET; 15) NORTH 80 DEGREES 16 MINUTES 04 SECONDS EAST, 141.20 FEET; 16) SOUTH 84 DEGREES 03 MINUTES 22 SECONDS EAST, 39.74 FEET; 17) SOUTH 55 DEGREES 36 MINUTES 39 SECONDS EAST, 55.05 FEET; THENCE SOUTH 42 DEGREES 08 MINUTES 46 SECONDS WEST, 291.64 FEET; THENCE SOUTHEASTERLY ALONG THE ARC OF A CURVE CONCAVE TO THE SOUTHWEST, HAVING A RADIUS OF 130.00 FEET, HAVING A CHORD BEARING OF SOUTH 44 DEGREES 09 MINUTES 17 SECONDS EAST, A DISTANCE OF 16.79 FEET; THENCE ALONG A LINE COINCIDENT WITH THE NEXT ELEVEN, (11) COURSES AND DISTANCES: 1) NORTH 49 DEGREES 32 MINUTES 39 SECONDS EAST, 120.00 FEET; 2) SOUTH 29 DEGREES 17 MINUTES 45 SECONDS EAST, 96.77 FEET; 3) SOUTH 06 DEGREES 58 MINUTES 33 SECONDS EAST, 96.77 FEET; 4) SOUTH 12 DEGREES 43 MINUTES 35 SECONDS WEST, 74.27 FEET; 5) SOUTH 21 DEGREES 16 MINUTES 08 SECONDS WEST, 601.97 FEET; 6) SOUTH 27 DEGREES 18 MINUTES 29 SECONDS WEST, 70.99 FEET; 7) SOUTH 45 DEGREES 58 MINUTES 37 SECONDS WEST, 95.62 FEET; 8) SOUTH 67 DEGREES 35 MINUTES 27 SECONDS WEST, 95.63 FEET; 9) SOUTH 89 DEGREES 13 MINUTES 54 SECONDS WEST, 95.86 FEET; 10) NORTH 69 DEGREES 06 MINUTES 01 SECONDS WEST, 95.86 FEET; 11) NORTH 47 DEGREES 27 MINUTES 34 SECONDS WEST, 95.63 FEET; THENCE NORTH 53 DEGREES 20 MINUTES 51 SECONDS EAST, 120.00 FEET; THENCE NORTHWESTERLY ALONG THE ARC OF A CURVE CONCAVE TO THE NORTHEAST, HAVING A RADIUS OF 135.00 FEET, HAVING A CHORD BEARING OF NORTH 33 DEGREES 04 MINUTES 09 SECONDS WEST, A DISTANCE OF 16.89 FEET; THENCE ALONG A LINE COINCIDENT WITH THE NEXT FIFTEEN (15) COURSES AND DISTANCES: 1) SOUTH 60 DEGREES 30 MINUTES 51 SECONDS WEST, 120.00 FEET; 2) NORTH 18 DEGREES 40 MINUTES 44 SECONDS WEST, 95.62 FEET; 3) NORTH 01 DEGREES 58 MINUTES 12 SECONDS WEST, 71.99 FEET; 4) NORTH 01 DEGREES 28 MINUTES 18 SECONDS WEST, 58.68 FEET; 5) NORTH 02 DEGREES 59



MINUTES 20 SECONDS WEST, 47.24 FEET; 6) NORTH 04 DEGREES 20 MINUTES 17 SECONDS WEST, 46.94 FEET; 7) NORTH 05 DEGREES 51 MINUTES 04 SECONDS WEST, 58.68 FEET; 8) NORTH 07 DEGREES 21 MINUTES 51 SECONDS WEST, 46.94 FEET; 9) NORTH 08 DEGREES 42 MINUTES 32 SECONDS WEST, 46.94 FEET; 10) NORTH 10 DEGREES 03 MINUTES 14 SECONDS WEST, 46.94 FEET; 11) NORTH 11 DEGREES 23 MINUTES 55 SECONDS WEST, 46.94 FEET; 12) NORTH 12 DEGREES 44 MINUTES 37 SECONDS WEST, 46.94 FEET; 13) NORTH 14 DEGREES 05 MINUTES 18 SECONDS WEST, 46.94 FEET; 14) NORTH 15 DEGREES 36 MINUTES 05 SECONDS WEST, 58.68 FEET; 15) NORTH 17 DEGREES 23 MINUTES 53 SECONDS WEST, 372.43 FEET; THENCE NORTH 73 DEGREES 17 MINUTES 17 SECONDS EAST, 120.00 FEET: THENCE NORTHWESTERLY ALONG THE ARC OF A CURVE CONCAVE TO THE NORTHEAST, HAVING A RADIUS OF 330.00 FEET, HAVING A CHORD BEARING OF NORTH 15 DEGREES 05 MINUTES 52 SECONDS WEST, A DISTANCE OF 18.59 FEET: THENCE ALONG A LINE COINCIDENT WITH THE NEXT TEN (10) COURSES AND DISTANCES: 1) SOUTH 76 DEGREES 30 MINUTES 59 SECONDS WEST, 120.00 FEET; 2) NORTH 08 DEGREES 38 MINUTES 09 SECONDS WEST, 76.06 FEET; 3) NORTH 00 DEGREES 05 MINUTES 18 SECONDS EAST 60.85 FEET; 4) NORTH 07 DEGREES 50 MINUTES 28 SECONDS EAST, 60.85 FEET; 5) NORTH 15 DEGREES 35 MINUTES 39 SECONDS EAST 60.85 FEET; 6) NORTH 23 DEGREES 20 MINUTES 50 SECONDS EAST, 60.85 FEET; 7) NORTH 31 DEGREES 06 MINUTES 00 SECONDS EAST, 60.85 FEET; 8) NORTH 38 DEGREES 51 MINUTES 11 SECONDS EAST, 84.47 FEET; 9) NORTH 89 DEGREES 42 MINUTES 24 SECONDS EAST, 154.92 FEET; 10) NORTH 00 DEGREES 29 MINUTES 10 SECONDS WEST, 349.40 FEET: THENCE NORTH 89 DEGREES 42 MINUTES 23 SECONDS EAST ALONG THE NORTH LINE OF THE NORTHWEST QUARTER OF SAID SECTION 9 A DISTANCE OF 350.00 FEET TO THE PLACE OF BEGINNING, IN LAKE COUNTY, INDIANA.



LEGAL DESCRIPTION PARCEL 3

THAT PART OF THE NORTH HALF OF SECTION 9, TOWNSHIP 35 NORTH, RANGE 7 WEST OF THE SECOND PRINCIPAL MERIDIAN DESCRIBED AS FOLLOWS: COMMENCING AT A FOUND IRON ROD AT THE NORTH QUARTER CORNER OF SAID SECTION 9; THENCE NORTH 89 DEGREES 42 MINUTES 23 SECONDS EAST ALONG THE NORTH LINE OF THE NORTHEAST QUARTER OF SAID SECTION 9 A DISTANCE OF 64.32 FEET FOR A PLACE OF BEGINNING; THENCE CONTINUING NORTH 89 DEGREES 42 MINUTES 23 SECONDS EAST ALONG SAID NORTH LINE OF THE NORTHEAST QUARTER OF SECTION 9 A DISTANCE OF 1249.68 FEET; THENCE SOUTH 00 DEGREES 20 MINUTES 49 SECONDS EAST ALONG THE EAST LINE OF THE WEST HALF OF THE NORTHEAST QUARTER OF SAID SECTION 9 A DISTANCE OF 416.13 FEET; THENCE ALONG A LINE COINCIDENT WITH THE NEXT FOURTEEN (14) COURSES AND DISTANCES: 1) NORTH 86 DEGREES 21 MINUTES 26 SECONDS WEST 158.59 FEET; 2) SOUTH 69 DEGREES 25 MINUTES 22 SECONDS WEST, 74.48 FEET; 3) NORTH 82 DEGREES 11 MINUTES 37 SECONDS WEST, 77.59 FEET; 4) NORTH 85 DEGREES 32 MINUTES 48 SECONDS WEST, 78.81 FEET; 5) NORTH 87 DEGREES 32 MINUTES 37 SECONDS WEST, 79.32 FEET; 6) SOUTH 84 DEGREES 04 MINUTES 32 SECONDS WEST, 62.58 FEET; 7) SOUTH 77 DEGREES 01 MINUTES 56 SECONDS WEST, 71.20 FEET; 8) NORTH 89 DEGREES 53 MINUTES 35 SECONDS WEST, 181.97 FEET; 9) NORTH 76 DEGREES 15 MINUTES 19 SECONDS WEST, 82.99 FEET; 10) NORTH 51 DEGREES 27 MINUTES 24 SECONDS WEST, 113.00 FEET; 11) NORTH 57 DEGREES 15 MINUTES 28 SECONDS WEST, 117.09 FEET; 12) NORTH 66 DEGREES 48 MINUTES 43 SECONDS WEST, 69.78 FEET; 13) NORTH 65 DEGREES 08 MINUTES 27 SECONDS WEST, 93.36 FEET; 14) NORTH 74 DEGREES 36 MINUTES 43 SECONDS WEST, 60.08 FEET; THENCE NORTH 00 DEGREES 29 MINUTES 10 SECONDS WEST, 191.74 FEET TO THE PLACE OF BEGINNING; IN LAKE COUNTY INDIANA.



A handwritten signature in black ink, appearing to be "J.F. J.", is written over the seal and extends to the right.